

Backup Utility

The Buffalo Backup Utility is software to back up and restore data from your PC. To use, select the source drives to be backed up and a target location for backup data.

Features

- **Back up a drive.**

Backs up all data on on a selected drive. You can specify which files and folders are backed up from the configuration screen.

- Files currently in use will not be backed up.
- When backing up the system drive, files in the Windows and Program Files folders will not be backed up.

- **Specify when the backup utility runs.**

You may configure the backup program to run at regular intervals or at a specified time.

- **Select which data is recovered from screenshots.**

Backups are saved with screenshots to aid in selecting which data to restore.

Limitations

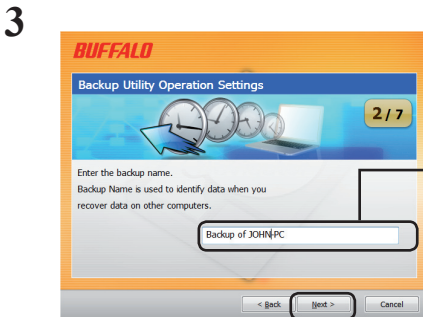
- Data from Windows and Program Files folders are not backed up.
- Files that are currently in use are not backed up. Files which could not be backed up can be viewed in the error log.
- For best results, the backup destination drive should be formatted with NTFS. If the backup destination drive is formatted with FAT 32, then files larger than 4 GB cannot be saved.
- To install the Backup Utility, log in to your computer with an Administrator account.
- Backup by multiple users is not supported.

Configuration

- 1 Right-click on the (🌐) icon in the systray and select [Settings].
After installation, the screen shown in Step 2 is displayed. Go to Step 2.

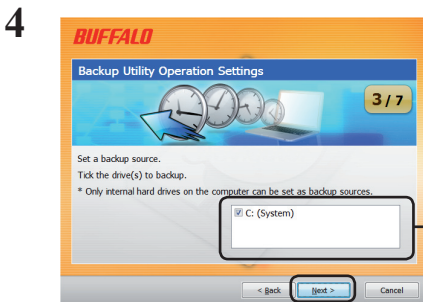


Click [Next].



1. Enter a name for the backup, or just leave the default name in the window.

2. Click [Next].

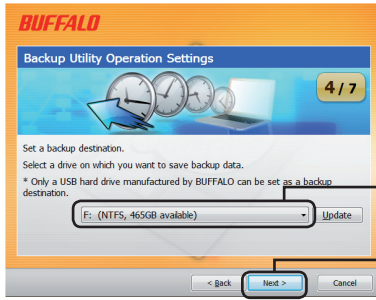


1. Check the source drives that you want to back up.

2. Click [Next].

Go to Next Page

5



1. Select a target drive to back up to.

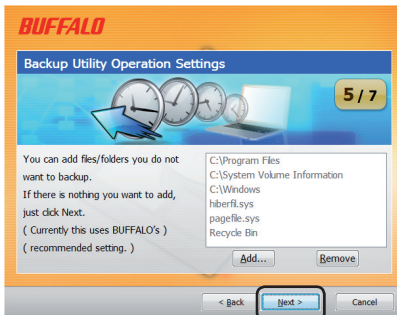
2. Click [Next].

Notes: The target drive should be a compatible Buffalo external hard drive connected to your computer.

If your external hard drive is not visible as a target choice, check its data and power connections.

If the external hard drive is formatted with FAT 32, the warning "Backup destination uses FAT 32 file system. Files with the size of 4 GByte cannot be backed up." will appear. FAT 32 is not recommended for backup drives because it doesn't allow files larger than 4 GB to be backed up. For best results, reformat the external drive with a format like NTFS that supports files larger than 4 GB.

6

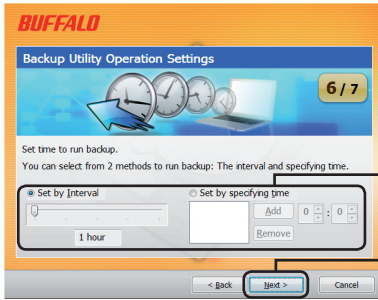


You may choose to *not* back up some folders. Click [Add] to select folders. Selected folders will not be backed up.

Click [Next].

Go to Next Page

7

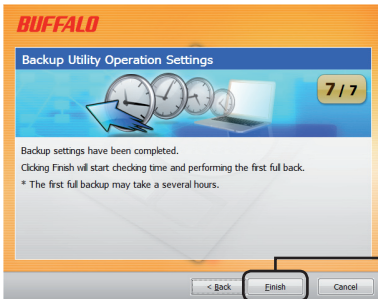


1. Choose a time to run the backup job.

2. Click [Next].

If you configure the backup job to run at a specified interval, your computer must be powered on at the specified time for the backup job to run.

8



Click [Finish].

The Wizard will ask you if the current time is correct. If it is not, correct the time settings in your computer and reconfigure the backup job.


Backup jobs

After configuration, the backup job runs automatically at the specified interval. You do not have to initiate it. However, the backup job will not be performed if the backup destination drive is disconnected or if the computer is in energy-saving mode when the backup is scheduled.

Tip: To see the next backup job, hold the mouse cursor over the () backup icon in the system tray.

Checking logs


If files are not backed up for some reason, a note to that effect will be added to the log. To check the log, follow the steps below.

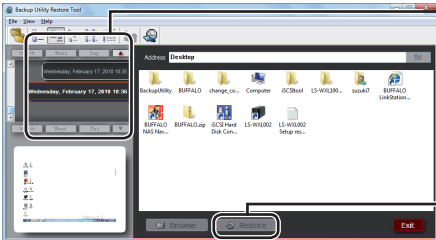
- 1 Right-click on the () icon in the systray and click [View Error Log].
- 2 Select the date and time you want to check the log for and click [View Log].

You can now view the log.

Restoring data from a backup

To restore data from a backup, follow the steps below.

- 1 Right-click on the () icon in the systray and select [Run Recovery Tool].

- 2 
 1. Select the time and date on which data you want to recover was backed up.
 2. Select the folders and files you want to restore
 3. Click [Restore].

Restoration may take several hours, depending on how much data is being restored.