

**User Manual**  
**Wireless N High Power USB Adapter**  
**WLI-UC-G300HP / WLI-UC-G300HP-V1**



# Contents

<b>Chapter 1 - Product Overview .....</b>	<b>4</b>
Features .....	4
300 Mbps High Speed Mode.....	4
System Requirements.....	5
Package Contents.....	5
Hardware Overview.....	5
<b>Chapter 2 - Installation.....</b>	<b>6</b>
Installing Wireless Drivers.....	6
Installing Utility .....	10
<b>Chapter 3 - Connect to a Wireless Network .....</b>	<b>13</b>
Automatic Secure Setup (AOSS/WPS).....	13
Windows 7/Vista (Client Manager V) .....	14
Windows XP/2000 (Client Manager 3).....	15
Automatic Secure Setup with WPS (PIN Method) .....	16
Windows 7/Vista (Client Manager V) .....	16
Windows XP (Client Manager 3).....	20
Manual Setup (Client Manager) .....	22
Windows 7/Vista (Client Manager V) .....	22
Windows XP/2000 (Client Manager 3).....	25
Windows Vista (WLAN AutoConfig) .....	27
Windows XP (Wireless Zero Configuration).....	30

## **Chapter 4 - Client Manager ..... 31**

---

Software Overview .....	31
Using Client Manager V for Windows 7/Vista .....	31
Opening and Closing Client Manager .....	31
Main Screen.....	32
Automatic Secure Setup and Advanced Setup .....	33
SSID / WPS-PIN selection .....	34
Searching Wireless Access Points.....	35
Wireless Network Information .....	36
WPS-PBC / AOSS selection .....	37
Wireless Status .....	38
Wireless LAN Diagnostic .....	40
Profile List .....	41
Wireless Properties.....	42
Network Properties .....	43
Browser Properties .....	44
Printer Properties .....	45
Using Client Manager 3 with Windows XP / 2000 .....	46
Status.....	47
Scan.....	49
Connect.....	50
Profiles .....	51
Profile Information (Basic).....	52
Profile Information (Network) .....	54
Profile Information (Browser) .....	55
Profile Information (Printers).....	56
System Tray Menu .....	57
Option Menu .....	58

## **Chapter 5 - Troubleshooting..... 60**

---

The computer does not recognize the wireless adapter.....	60
Cannot connect to the Network wirelessly. ....	60
You forgot the AP's SSID, Encryption key, or password. ....	60
The link speed is slower than 300 Mbps (Maximum link speed is only 144 Mbps).....	61
Other Tips.....	61

## **Appendix ..... 64**

---

300 Mbps Mode settings .....	64
Specifications .....	65
Removing the device from the computer .....	66
Windows 7, Vista, and Windows XP .....	66
Windows 2000 .....	66
Uninstalling the Software .....	66
Uninstalling the Drivers .....	66
TCP/IP Settings in Windows .....	67
Windows 7 .....	67
Windows Vista .....	68
Windows XP.....	69
Antenna.....	70
FCC / CE / R&TTE Information .....	71
Environmental Information .....	77
Warranty.....	78

# Chapter 1 - Product Overview

## Features

---

With support for current Wireless-N, Wireless-G, and Wireless-B standards, the AirStation can transfer data to and from all standard 2.4 GHz wireless network devices.

AOSS (AirStation One-touch Secure System) and WPA (Wi-Fi Protected Setup) make connection with wireless devices easier.

The AirStation supports the following types of encryption:

- WPA-PSK (TKIP/AES)
- WPA2-PSK (TKIP/AES)
- WEP (128/64 bit)

The movable antenna can be adjusted for the best signal strength.

The LED display shows wireless signal strength.

## 300 Mbps High Speed Mode

---

300 Mbps is the link speed when using 2 channel Wireless-N mode. It represents actual wireless data speeds, including overhead. Because the overhead is not available for user data transfer, usable wireless throughput will be substantially slower.

## System Requirements

---

Computer should be IBM/PC compatible (OADG specification) with a USB 2.0 port and a CD-ROM drive.\*

This product does not support computers equipped with dual processors (computers with two physical CPUs). Computers with dual-core CPU's are supported.

The AirStation does not support standby mode in Windows Vista.

Compatible Operating Systems: Windows 7 (32 bit and 64 bit), Vista (32 bit), XP (32 bit), 2000

Windows XP requires Service Pack 2 or later.

Windows 2000 requires Service Pack 4 and Internet Explorer 5.5 or later.

## Package Contents

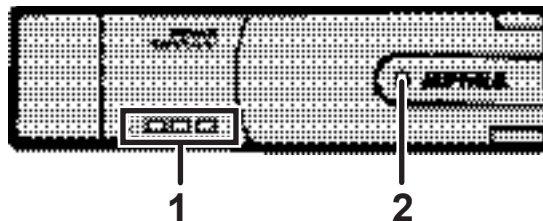
---

The following items are included with your AirStation. If any of the items are missing, please contact your vender.

- WLI-UC-G300HP ..... 1
- USB cable ..... 1
- Air Navigator CD..... 1
- Quick Setup Guide..... 1

## Hardware Overview

---



- 1** Signal LED (Green)    One to three LEDs light up to show the strength of the wireless signal.
- 2** ACT LED (Blue)        Flashes when sending/receiving data.

# Chapter 2 - Installation

## Installing Wireless Drivers

---

Follow the instructions below to install drivers. Do not connect the unit to your computer yet.

- 1 Boot your computer and insert the AirNavigator CD. The AirNavigator Setup Wizard will launch automatically.

Note: If the AirNavigator Setup Wizard doesn't launch, double-click [My Computer] > CD-ROM drive icon > [AirNavi.exe] to launch manually.

- 2  Click [Begin Installation].

- 3  Click [AirStation Wireless LAN Adapters].

4



Disable any firewalls, then click [Next].

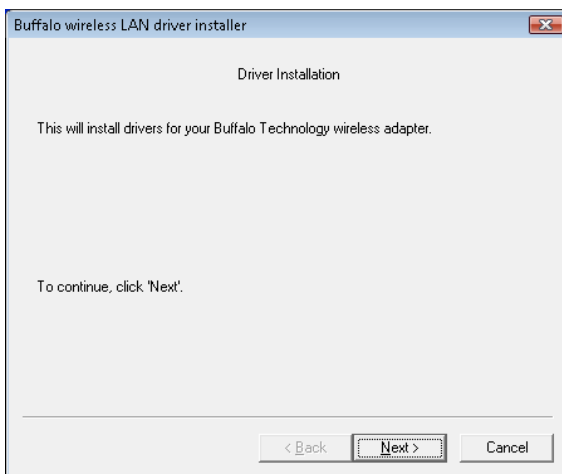
5



Click [Install].

Notes: To install Client Manager, check the box in the lower window.  
To install Client Manager at a later time, refer to the instructions on page 10.

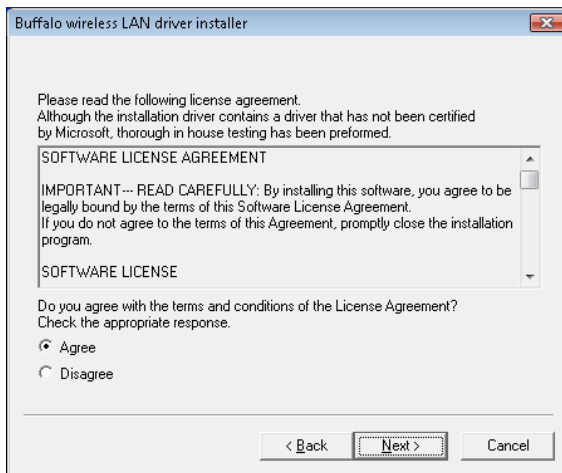
6



Click [Next].

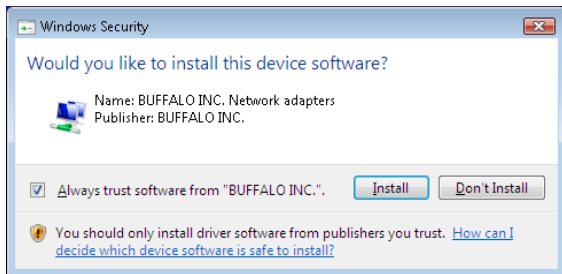


7



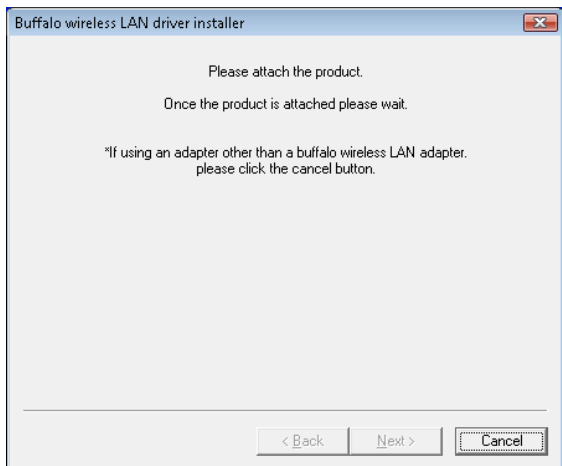
Read the license agreement, select [Agree], then click [Next].

8



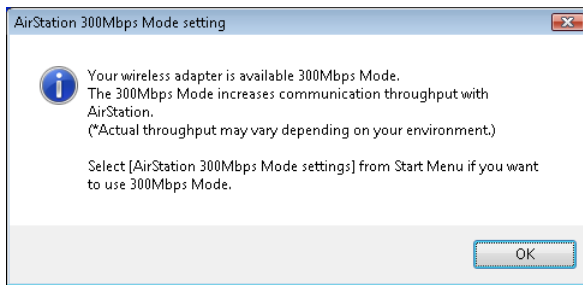
When the screen to the left is displayed, put a check mark next to "Always trust software from BUFFALO INC.," and click [Install].

9



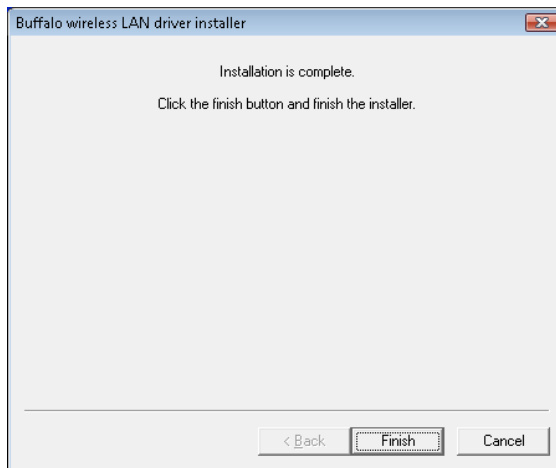
When the screen to the left is displayed, attach the AirStation to your computer. Drivers will be installed automatically.

10



Click [OK].

11



After the drivers are installed, the screen at left will be displayed. Click [Finish].

Note: If you checked the box to Install Wireless Client Manager (page 8), then the installation screen for Client Manager will be displayed after this screen. Follow the instructions on the screen to install Client Manager.

Drivers are now installed.


## Installing Utility

---

Follow the procedure below to install *Client Manager*.

- 1 Boot your computer and insert the AirNavigator CD. The AirNavigator Setup Wizard will launch automatically.

Note: If the AirNavigator Setup Wizard doesn't open, double-click [My Computer] > CD-ROM drive icon > [AirNavi.exe] to launch it manually.

- 2  Click [Options].

- 3  Click [Advanced Installation].

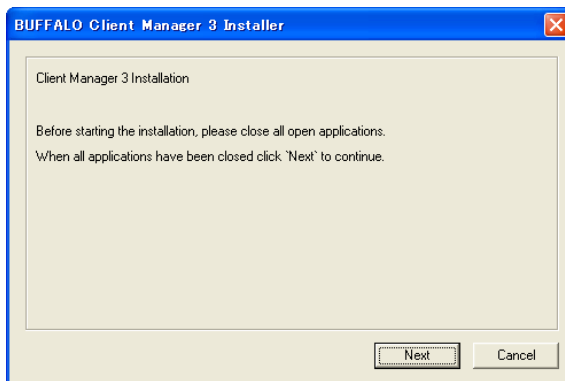
4



Check the box for [Install Wireless Client Manager] and click [Install].

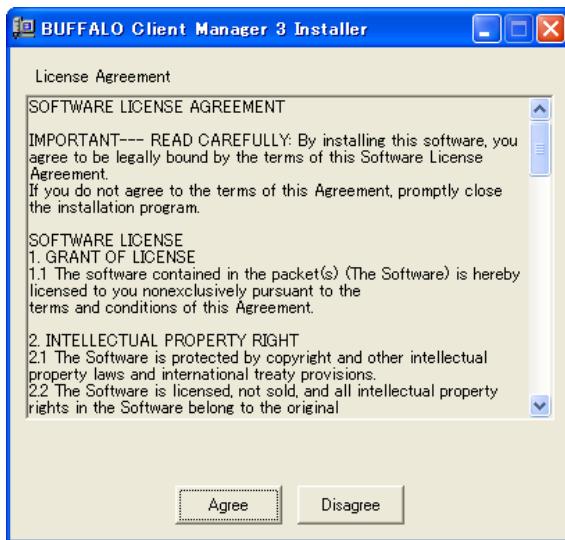
Note: Use Client Manager V with Windows Vista or Client Manager 3 with Windows XP or 2000.

5



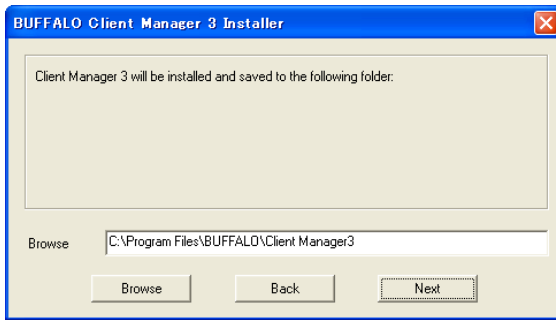
Click [Next].

6



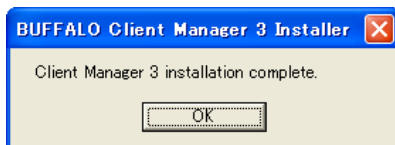
Read the license agreement and select [Agree].

7



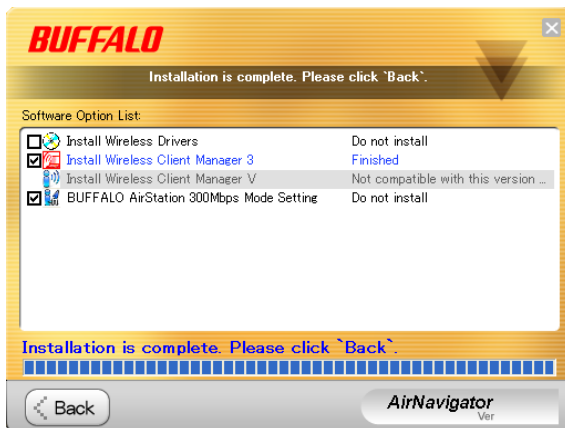
Click [Next].

8



Click [OK].

9



Click [Back].

10



Click [X] at the top right corner of the window to close it.

Client Manager is now installed.

# Chapter 3 - Connect to a Wireless Network

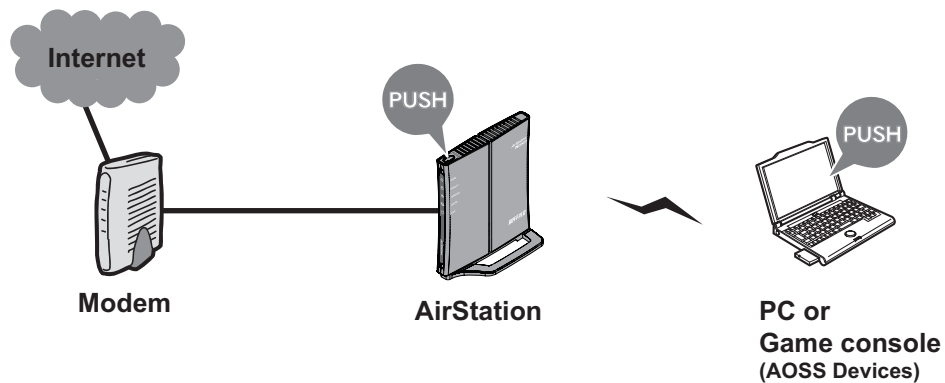
## Automatic Secure Setup (AOSS/WPS)

---

AOSS and WPS are systems for automatically configuring wireless LAN settings. Just pressing the buttons will connect wireless devices and complete security settings. Utilize this system to connect to wireless devices, computers, or game machines which support AOSS or WPS.



AOSS (AirStation One-Touch Secure System) is technology developed by BUFFALO. WPS was created by the Wi-Fi Alliance.



Before using AOSS or WPS, first install Client Manager from the CD. See page 10 for instructions.

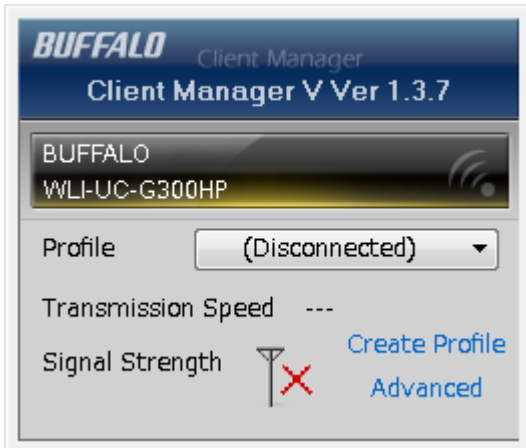
Note: In addition to the push-button method, WPS also supports automatic configuration using a PIN. Turn to page 16 for instructions on using WPS with a PIN>

## Windows 7/Vista (Client Manager V)

If you are using Windows 7 or Vista, use the included Client Manager V software to connect wirelessly with AOSS or WPS.

1 Click [Start] > [All Programs] > [BUFFALO] > [AirStation Utility] > [Client Manager V].

2

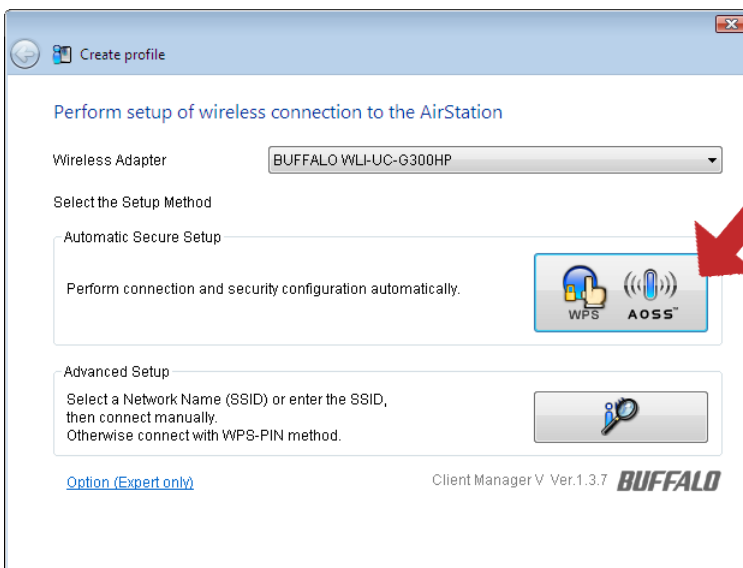


When the screen at left is displayed, click [Create Profile].

3

When the message "A Program needs your permission to continue" appears, click [Continue].

4



When the screen shown at left is displayed, click the [WPS AOSS] button.


When WPS/AOSS is complete, the message "Connection has been Completed" is displayed.

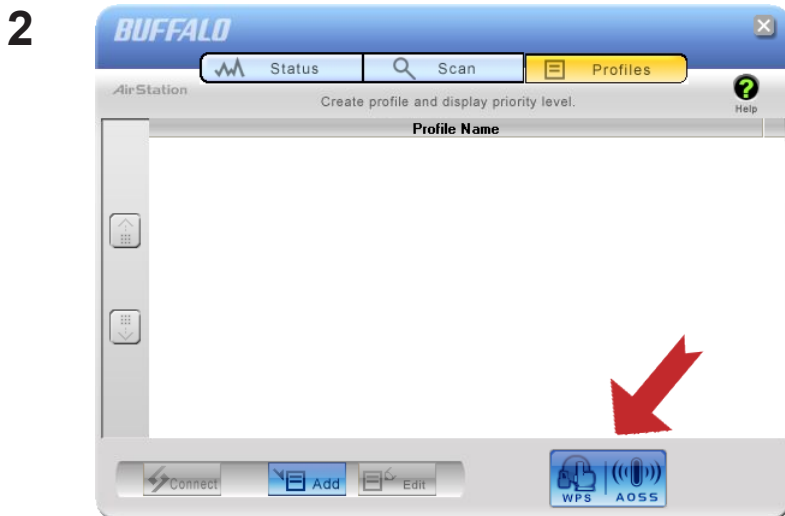
If the "Set Network Location" wizard opens, select "Home", "Work", or "Public location" depending on the environment in which the AirStation will be used.

## Windows XP/2000 (Client Manager 3)

If you are using Windows XP, use the included Client Manager 3 software to connect wirelessly with AOSS or WPS.

Note: Windows 2000 does not support WPS. AOSS is supported however.

1 Right click on the  icon in the system tray and select [Profile].



When this screen is displayed, click [WPS AOSS].

When WPS/AOSS is complete, the message "Security setup and connection have been completed" is displayed.



## Automatic Secure Setup with WPS (PIN Method)

---

WPS (Personal Identification Number Method) uses a unique number generated by the Client Manager utility program to automatically connect to an access point that supports WPS.

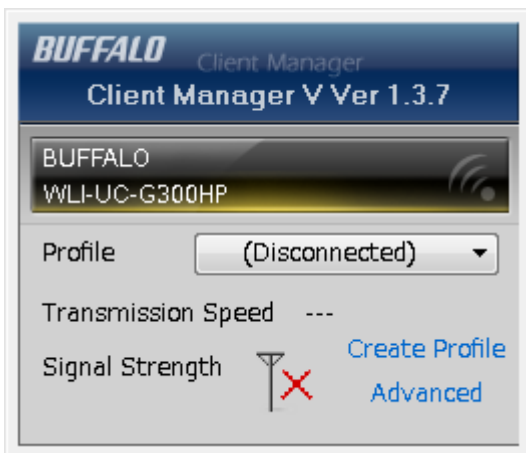
Before using WPS, install Client Manager from the CD. See page 10 for instructions.

### Windows 7/Vista (Client Manager V)

If you are using Windows 7 or Vista, use Client Manager V to connect wirelessly with a WPS PIN.

**1** Click [Start] > [All Programs] > [BUFFALO] > [AirStation Utility] > [Client Manager V].

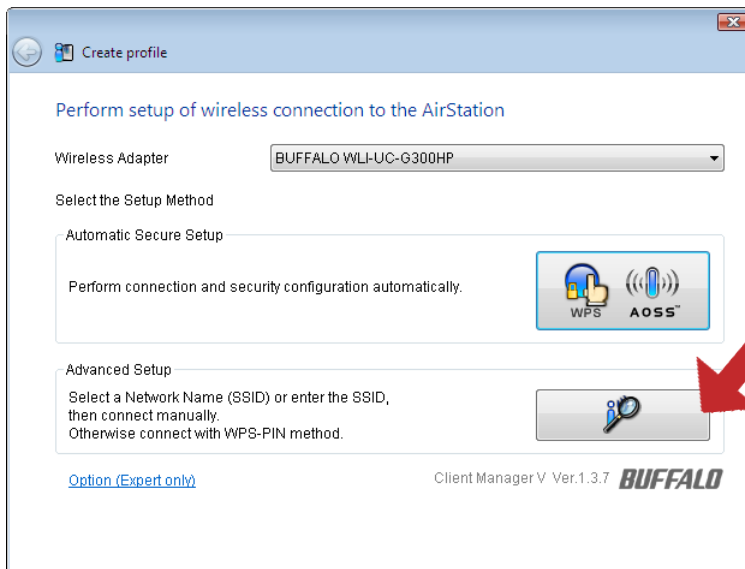
**2**



When this screen displayed, click [Create Profile].

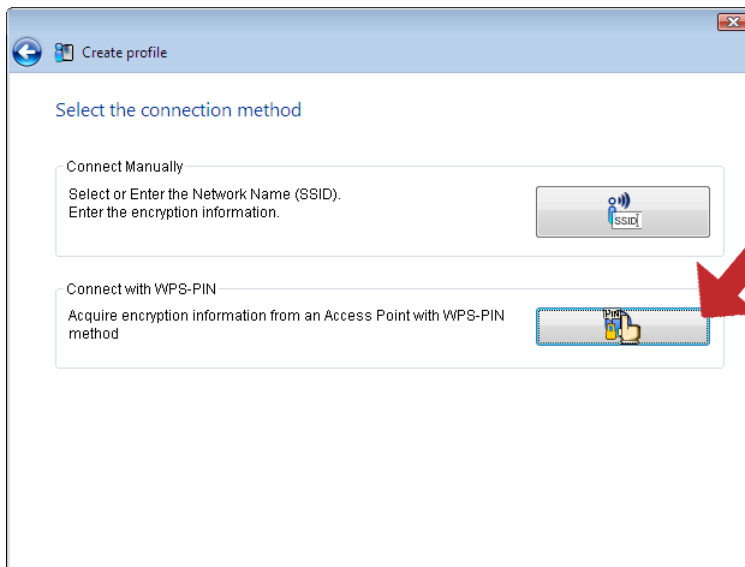
**3** When the message "A program needs your permission to continue" appears, click [Continue].

4



When this screen opens, click [Advanced Setup].

5



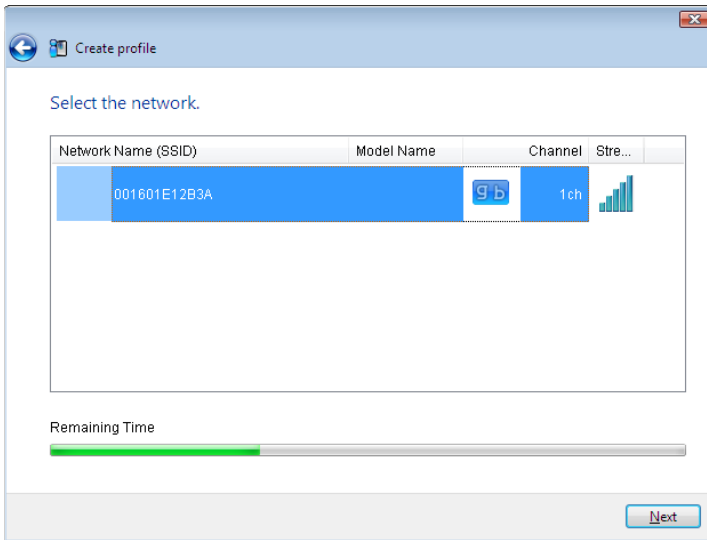
Then click [WPS-PIN].

6

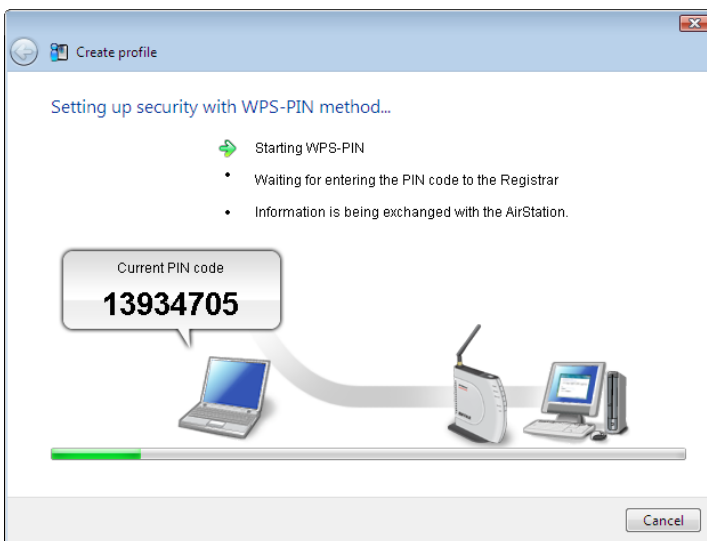


Write down the PIN code from this screen, then click [Next].

7



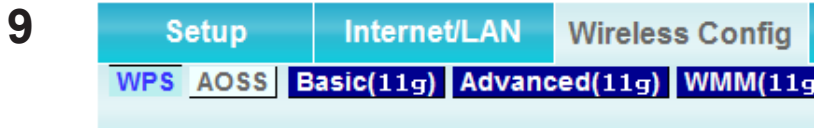
Select your access point, then click [Next].



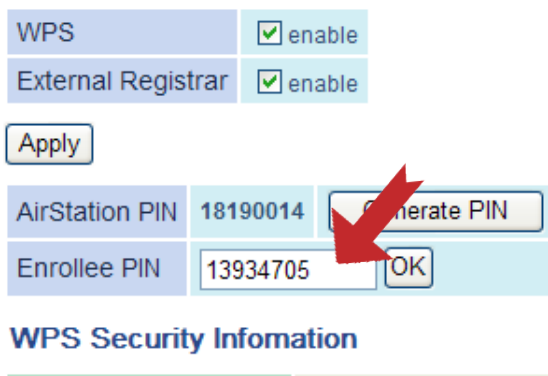
This screen will be displayed.

- 8** Use a computer with a wired connection to the access point to log in to the access point. Navigate to the WPS PIN page.

Note: If the access point is a Buffalo AirStation, navigate to [Wireless Config]> [WPS] to enter the PIN.



Enter the PIN that you wrote down in step 6.



The image shows the WPS configuration page. It has two checkboxes: 'WPS' (checked) and 'External Registrar' (checked). Below them is an 'Apply' button. There are two rows of input fields: 'AirStation PIN' with the value '18190014' and a 'Generate PIN' button; and 'Enrollee PIN' with the value '13934705' and an 'OK' button. A red arrow points to the 'Generate PIN' button.


Note: For a Buffalo AirStation, enter the PIN in [Enrollee PIN] and click [OK].

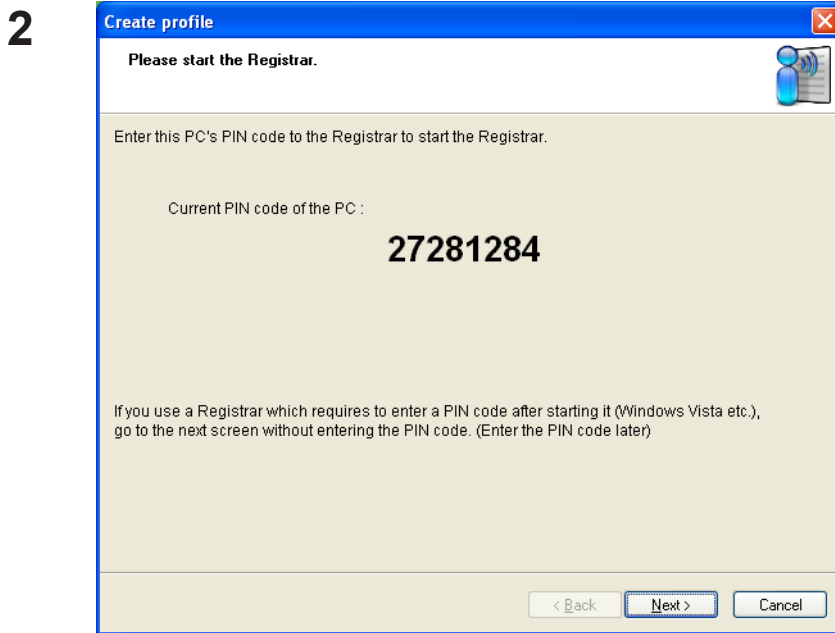
Setup will take several seconds. When the connection is complete, the message "Connection has been Completed" is displayed in Client Manager V. If the "Set Network Location" wizard opens, select "Home", "Work", or "Public location" depending on the environment in which the AirStation will be used.

## Windows XP (Client Manager 3)

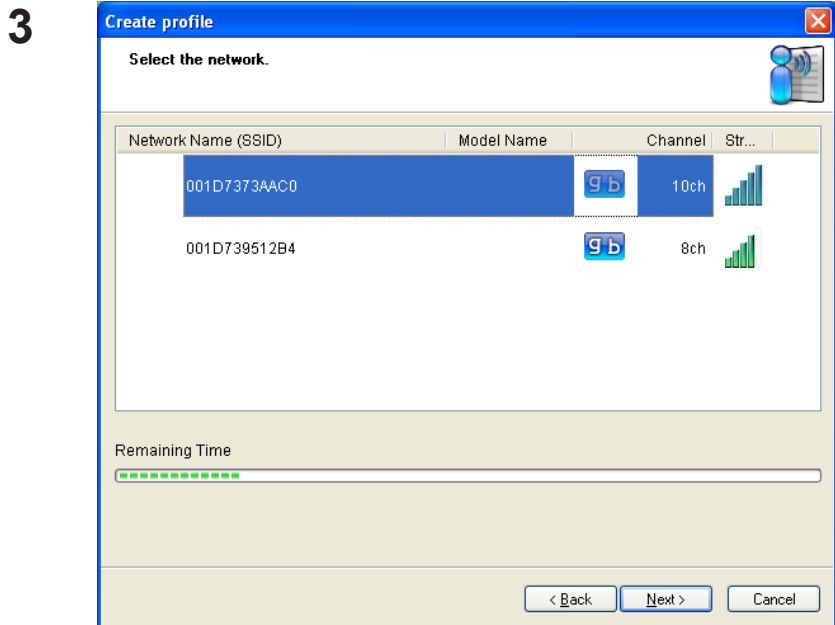
If you are using Windows XP, use Client Manager 3 which comes with this package and follow the procedure below to connect wirelessly with WPS (PIN).

Note: Windows 2000 does not support WPS (PIN).

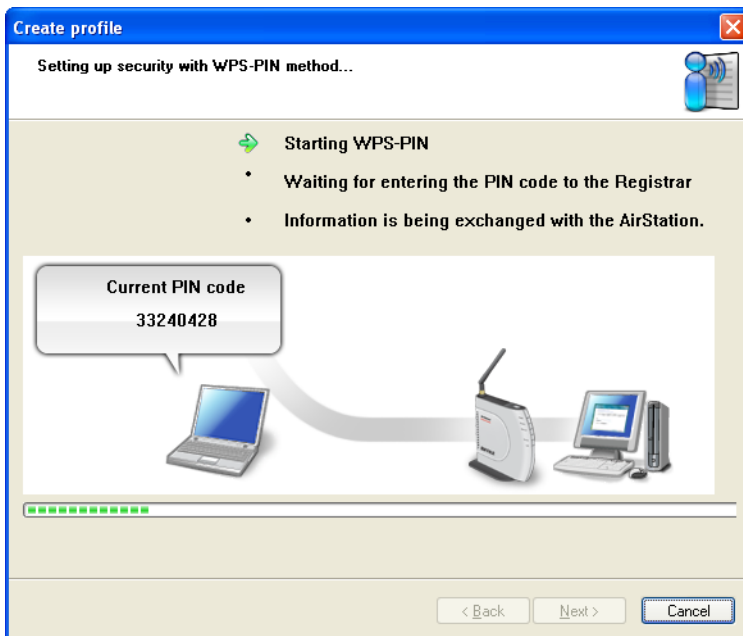
- 1 Right-click on the  icon in the system tray and select [Easy Connection] > [WPS PIN Code type].



When the PIN code is displayed, write it down. Then, click [Next].



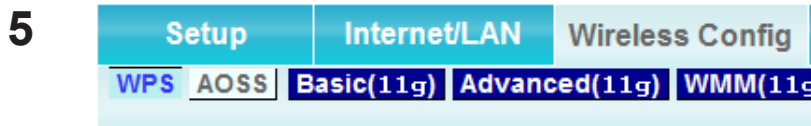
Select your access point and click [Next].



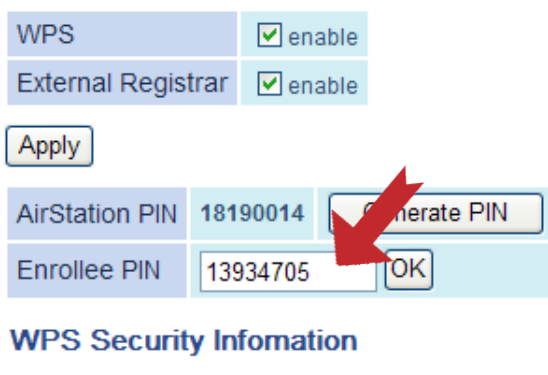
This screen will be displayed.

- 4 Use a computer with a wired connection to the access point to log in to the access point. Navigate to the WPS PIN page.

Note: If the access point is a Buffalo AirStation, navigate to [Wireless Config]> [WPS] to enter the PIN.



On the configuration screen of the access point, enter the PIN code you wrote down in step 2.



Note: For a Buffalo AirStation, enter the PIN in [Enrollee PIN] and click [OK].

Configuration will take several seconds. When "Connection has been completed" is displayed, you are connected.

## Manual Setup (Client Manager)

---

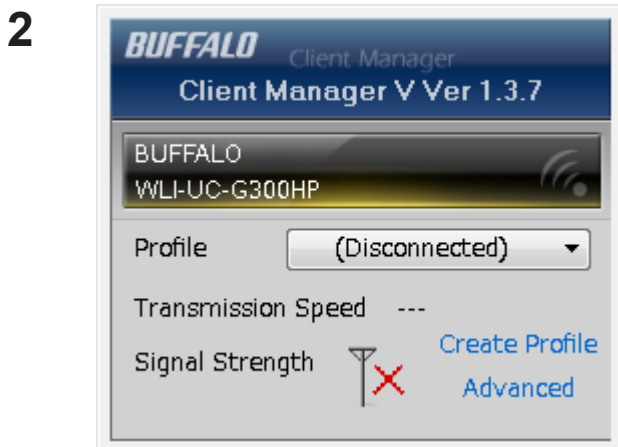
You may also connect to an access point manually, without using AOSS or WPS. The procedure varies depending on the version of Windows used.

First, install Client Manager from the CD. See page 10 for instructions.

### Windows 7/Vista (Client Manager V)

With Windows 7 or Vista, use Client Manager V to configure your wireless network.

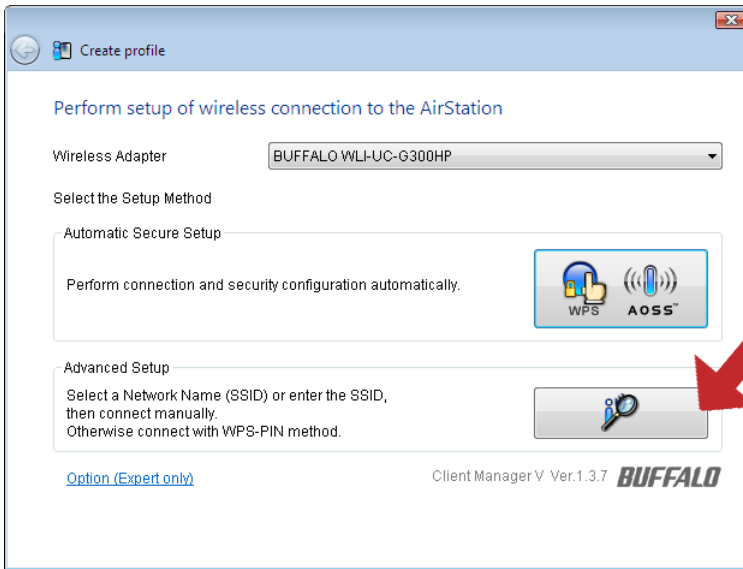
**1** Click [Start] > [All Programs] > [BUFFALO] > [AirStation Utility] > [Client Manager V].



When this screen is displayed, click [Create Profile].

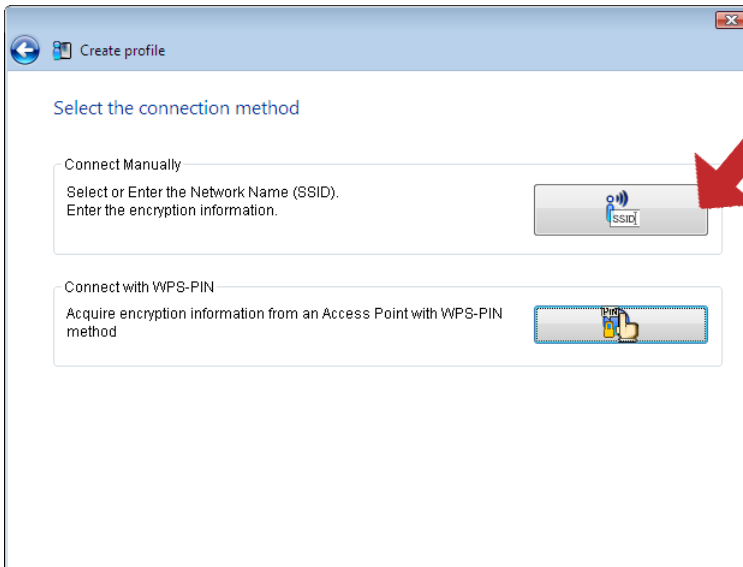
**3** When the message "A Program needs your permission to continue", click [Continue].

4



Click [Advanced Setup].

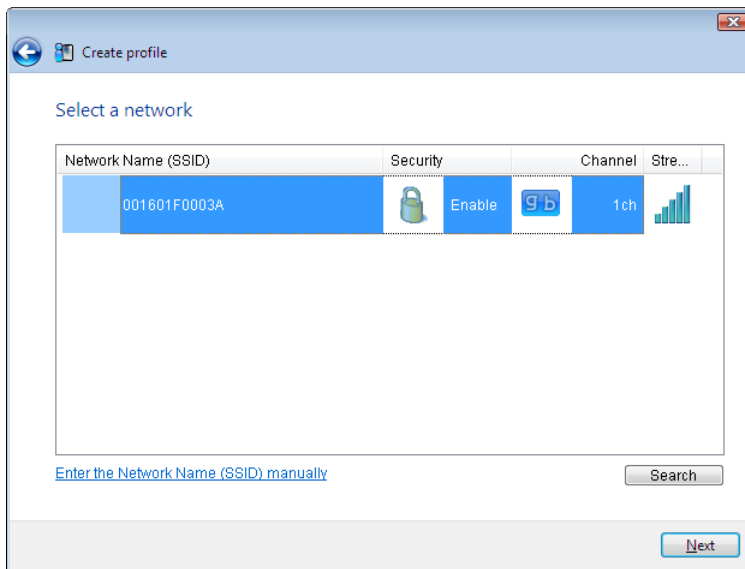
5



Click [Connect Manually].



6



Select your access point, then click [Next].

7




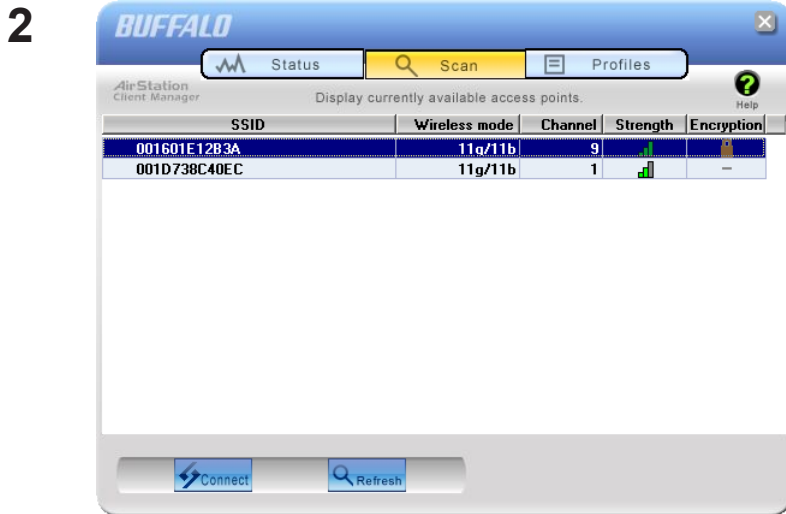
Enter your encryption key (passphrase), then click [Connect].

When "Connection Complete" is displayed, setup is completed. If "Set Network Location" is displayed, then select "Home", "Work", or "Public location" depending on the environment in which the AirStation will be used.

## Windows XP/2000 (Client Manager 3)

Client Manager 3 is a wireless connection utility for Windows XP and Windows 2000.

1 Right click on the  icon in the system tray and select [Scan].



Select the access point to connect to and click [Next].



Choose your [Encryption Method] and enter an [Encryption Key]. Click [Connect].


Follow the instructions on the screen to connect.

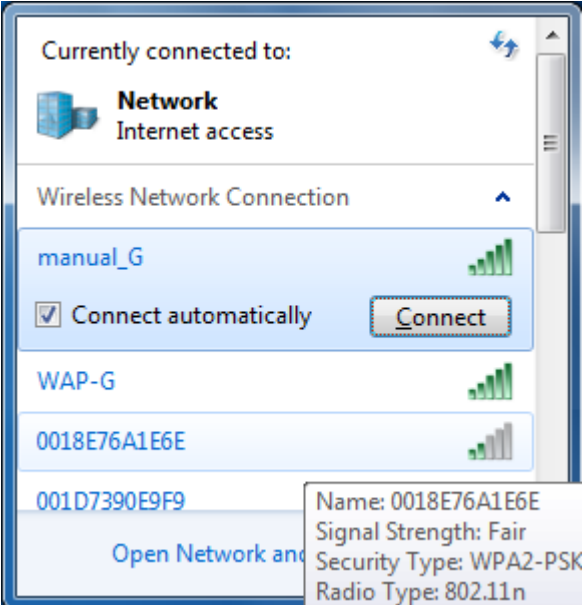
## Manual Setup (Windows Utility)


You can connect to an access point without installing or using Client Manager. Windows includes a built-in wireless utility. The procedure varies depending on the version of Windows used.

### Windows 7 (WLAN AutoConfig)

With Windows 7, use WLAN AutoConfig to connect to the AirStation.

- 1 Click on the network icon  in the system tray.

- 2  Select the target AirStation's name and click [Connect]. If you will be connecting to this device in the future, checking [Connect automatically] is recommended.

- 3  Enter the encryption key and click [OK].

It will take a few seconds for Windows to connect to the network.

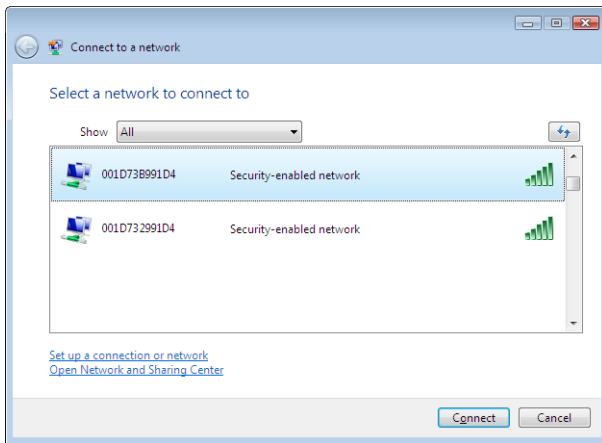
## Windows Vista (WLAN AutoConfig)

You can use WLAN AutoConfig to connect to a wireless access point.

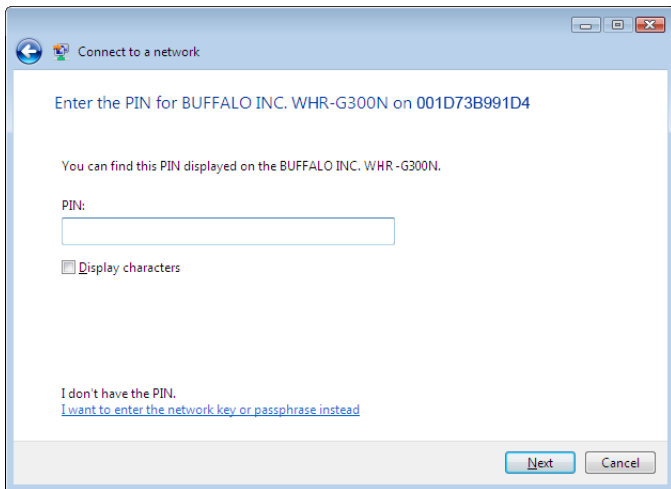
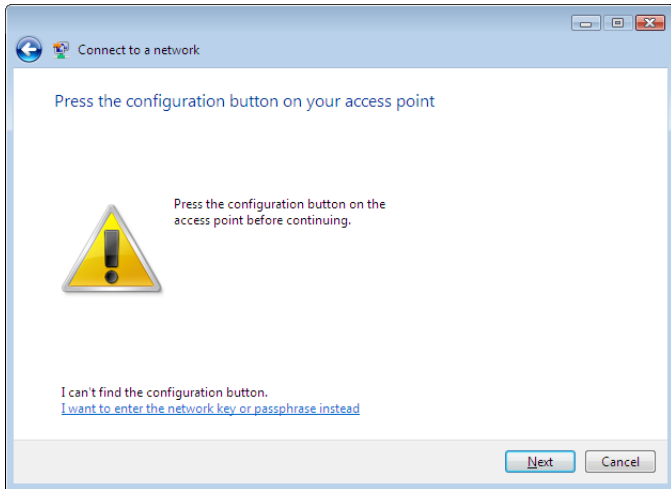
**1** Right click on the wireless network icon in the system tray.

**2** Click [Connect to a network].

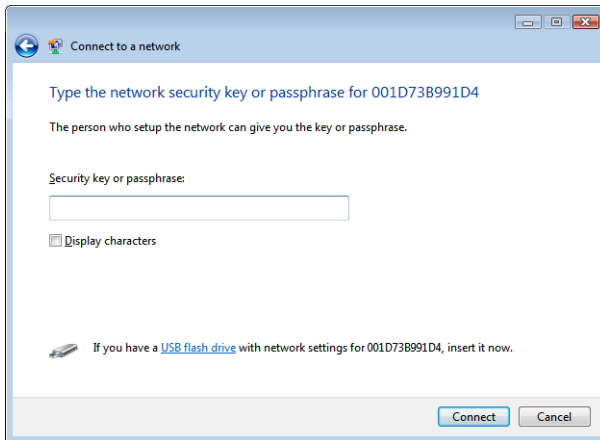
**3** Select your wireless network and click [Connect].



If the screen below is displayed, click “I want to enter the network key or passphrase instead”. Otherwise, go to step 4.



4



Enter the encryption key and click [Connect].

It will take several seconds for Windows to finish configuration. If the “Set Network Location” screen is displayed, select “Home”, “Work”, or “Public location” depending where you’re using the AirStation.

## Windows XP (Wireless Zero Configuration)

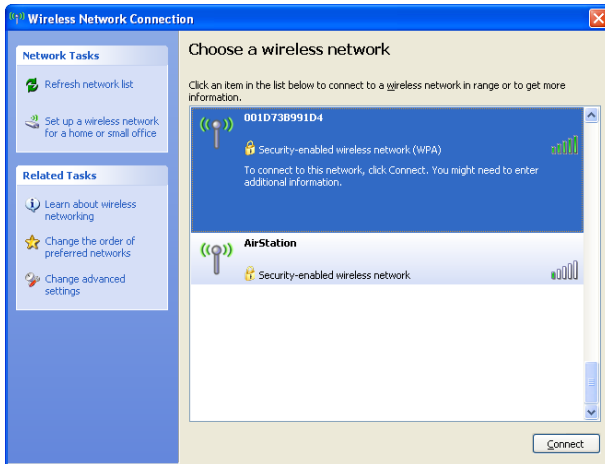
Windows XP includes a built-in utility to connect to your wireless network.

Note: If Client Manager 3 is installed on your computer, then Windows Zero Config is disabled. Uninstall Client Manager 3 to use Windows Zero Config, or just use Client Manager 3 to connect to the AirStation.

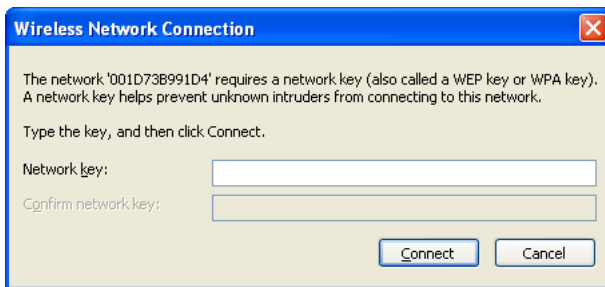
**1** Right click on the wireless network icon in the system tray.

**2** Click [View Available Wireless Networks].

**3** Select a wireless network to connect to and click [Connect].



**4** Enter the encryption key (passphrase) and click [Connect].



It will take several seconds for Windows to connect to your wireless network.

# Chapter 4 - Client Manager

## Software Overview

---

Client Manager is utility software used to connect to an access point on the network or to verify the connection between an access point and your computer. It is included with this device.

Note: There are two versions of Client Manager, "V" and "3".  
Client Manager V supports Windows 7 and Vista.  
Client Manager 3 supports Windows XP and Windows 2000.

## Using Client Manager V for Windows 7/Vista

---

### Opening and Closing Client Manager

- When you install Client Manager, it will be added to your Startup folder and will automatically launch with Windows. If Client Manager does not launch automatically, click [Start] > [All Programs] > [BUFFALO] > [AirStation Utility] > [ClientManager V] .
- Right-click on the Client Manager icon in the system tray and click [Exit] to close Client Manager. The appearance of Client Manager changes according to its connection status:



No wireless connection.

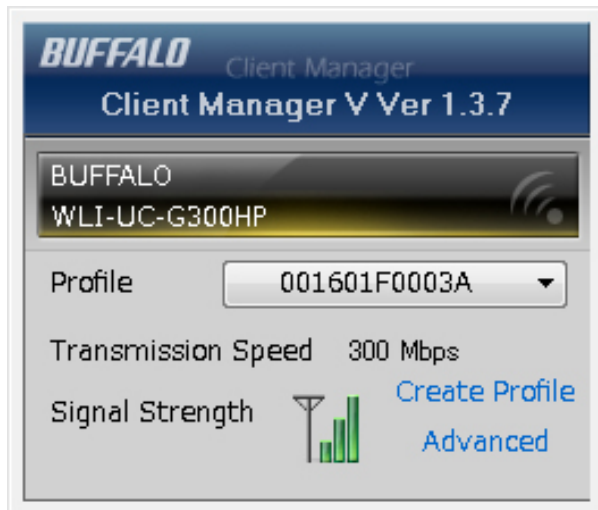


Communicating via an access point.



## Main Screen

The Main screen displays the current connection status. You can perform the following operations from this screen.



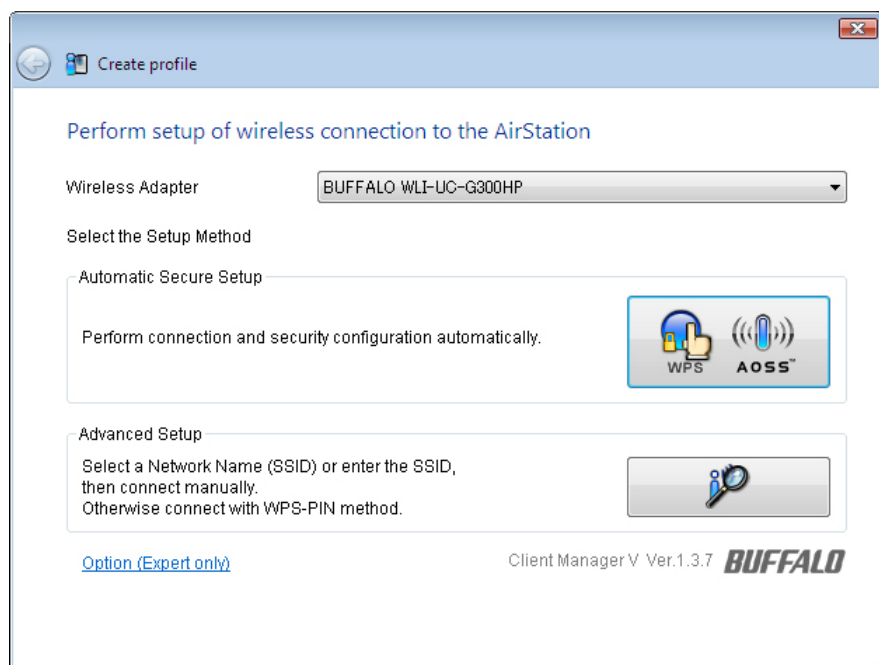
---

Parameter	Meaning
Profile	Displays information about the current connection points. If you have multiple connection points, you can switch among them.
Transmission Speed	Displays the current connection speed.
Signal Strength	Displays the current signal strength.
Create Profile	Click this to display the Automatic Secure Setup and Advanced Setup screen (page 33).
Advanced	Click this to display the Wireless Status screen.

---

## Automatic Secure Setup and Advanced Setup

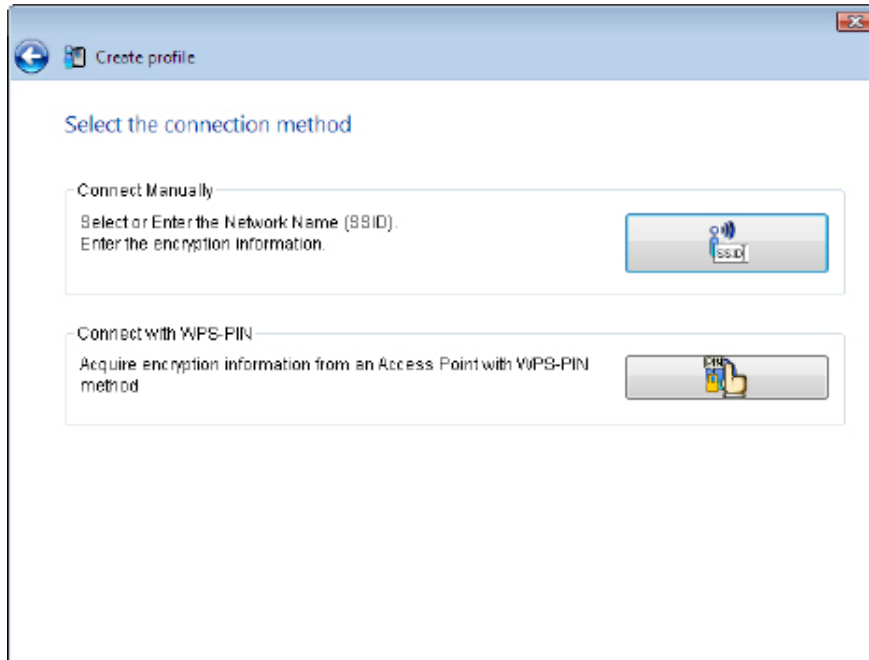
There are two ways to connect to an access point: automatic or manual. In the following wizard, automatic setup will be referred to as “AOSS/WPS” and manual setup will be referred to as “Advanced Setup”.



Parameter	Meaning
Wireless Adapter	Displays names of currently used wireless devices.
Automatic Secure Setup	Clicking this will search for an AOSS or WPS compatible access point to connect to automatically.
Advanced Setup	Click this to configure your wireless settings manually. It will display the SSID/WPS-PIN selection screen (page 34).
Option (Expert only)	Click this to specify whether you use AOSS or WPS (PBC) for connection in Automatic Secure Setup. It displays the WPS-PBC/ AOSS selection screen (page 37).

## SSID / WPS-PIN selection

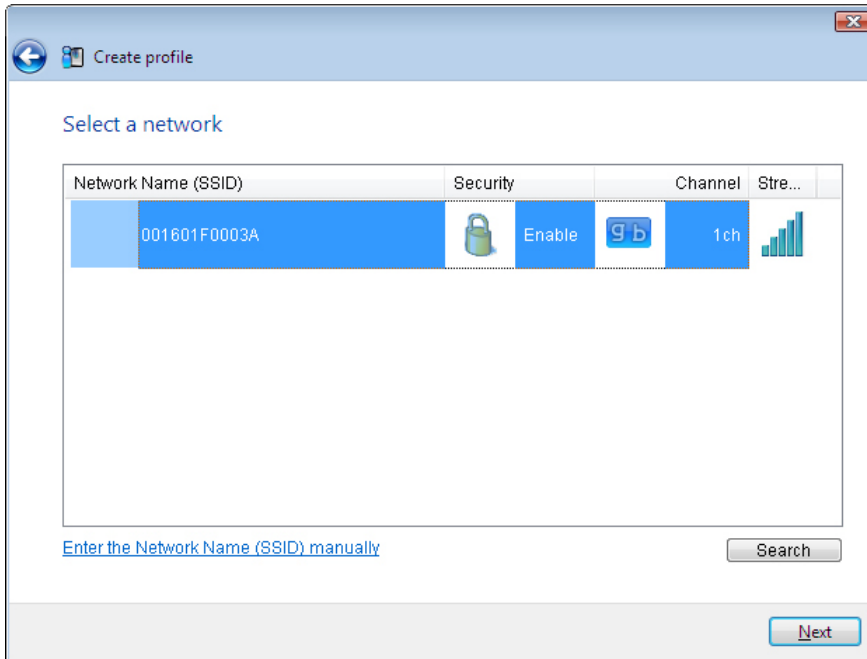
This screen lets you select whether to connect to an access point by specifying the SSID or by entering a WPS PIN.



Parameter	Meaning
Connect Manually	Specify SSID of an access point and configure connection settings. Click here to display the Searching Wireless Access Points screen (page 35).
Connect with WPS-PIN	Click this to connect to a wireless access point by entering its WPS PIN.

## Searching Wireless Access Points

The screen to list available wireless access points in your area. You can select an access point and enter network information manually to connect.



Parameter	Meaning
Network Name (SSID)	Displays the SSID of each available access point.
Security	Displays whether or not the access point uses encryption.
Channel	Displays the wireless channel used by an access point.
Strength	Displays the signal strength of an access point.
Enter the Network Name (SSID) manually	Click this to enter an SSID manually and display the Wireless Network Information screen (page 36).
Search	Click here to search for available access points again.
Next	Click this to display the Wireless Network Information screen (page 36).

## Wireless Network Information

Configure wireless connection settings.

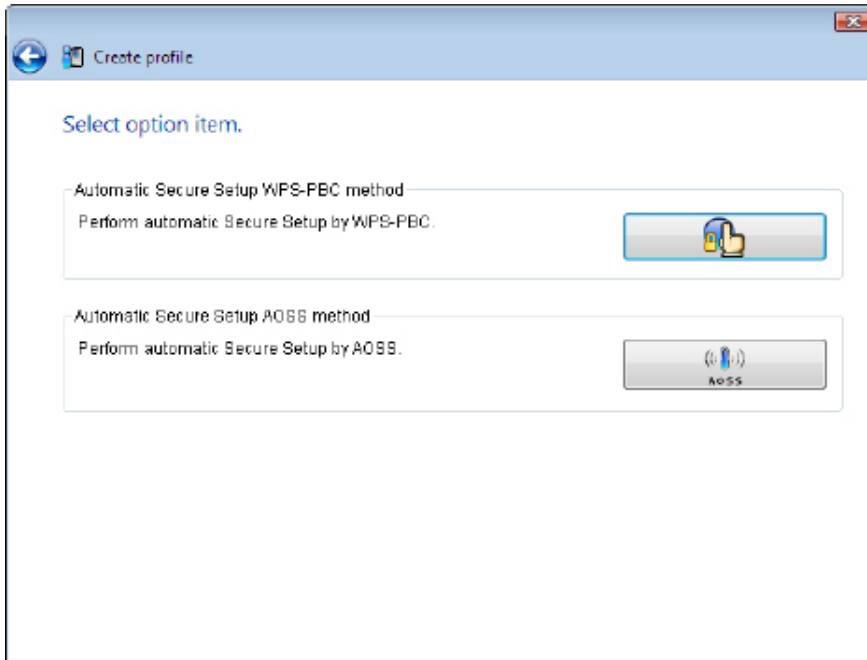
The screenshot shows a Windows-style dialog box titled "Create profile". The main heading is "Enter the information of the wireless network". The form contains the following fields and options:

- Network Type:** A dropdown menu with "Infrastructure Mode (Connect to Access Point)" selected.
- Network Name (SSID):** A text input field containing "[SSID]".
- Security Type:** A dropdown menu with "Open" selected.
- Encryption Method:** A dropdown menu with "No Encryption" selected.
- Encryption Key or Passphrase:** A text input field containing "[Not enter]".
- Display entered characters**
- Connect to a network which does not broadcast the SSID.**
- Warning: If you select this option, this PC's privacy may be exposed to danger.
- Connect:** A button at the bottom right.

Parameter	Meaning
Network Type	Select a type of connection.
Network Name (SSID)	Enter the SSID of an access point.
Security Type	Select the security type of the selected access point.
Encryption Method	Select the encryption method of the selected access point.
Encryption Key or Passphrase	Enter the encryption key for the access point.
Connect to a network which does not broadcast the SSID	Check this box to connect to a hidden SSID that is not broadcast.
Connect	Connect to the access point.

## WPS-PBC / AOSS selection

You may automatically connect to an access point by WPS or AOSS.



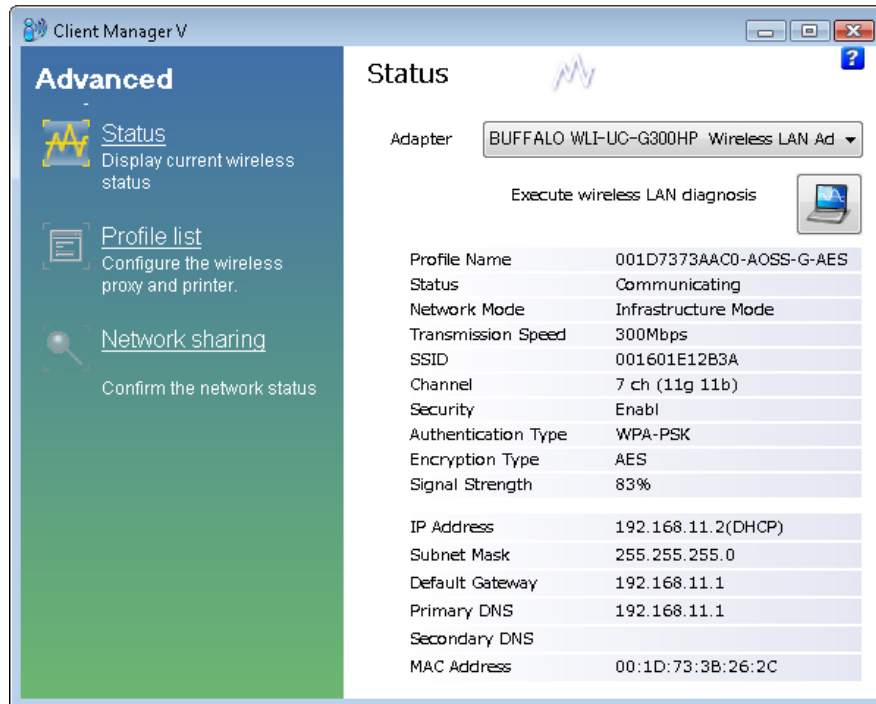
---

Parameter	Meaning
Automatic Secure Setup WPS-PBC method	Click this to automatically connect to an access point that supports WPS.
Automatic Secure Setup AOSS	Click this to automatically connect to an access point that supports AOSS.

---

## Wireless Status

This screen displays the current connection status.



Parameter	Meaning
Adapter	Displays the name of the current wireless client.
Execute wireless LAN diagnostics	Opens the Wireless LAN Diagnoses wizard (page 40).
Profile Name	Displays the current profile name.
Status	Displays the current transmission status.
Network Mode	Displays the current network mode.
Transmission Speed	Displays the current transmission speed.
SSID	Displays SSID of the currently connected access point.
Channel	Displays the wireless channel currently used.

---

<b>Parameter</b>	<b>Meaning</b>
Security	Displays whether encryption is currently enabled or not.
Authentication Type	Displays the type of authentication currently used.
Encryption Type	Displays the type of encryption currently used.
Signal Strength	Displays the current signal strength.
IP Address	Displays the IP address assigned to your wireless client.
Subnet Mask	Displays the subnet mask assigned to your wireless client.
Default Gateway	Displays the default gateway address.
Primary DNS	Displays the primary DNS address.
Secondary DNS	Displays the secondary DNS address.
MAC Address	Displays the MAC address of your wireless client.

---



## Wireless LAN Diagnostic

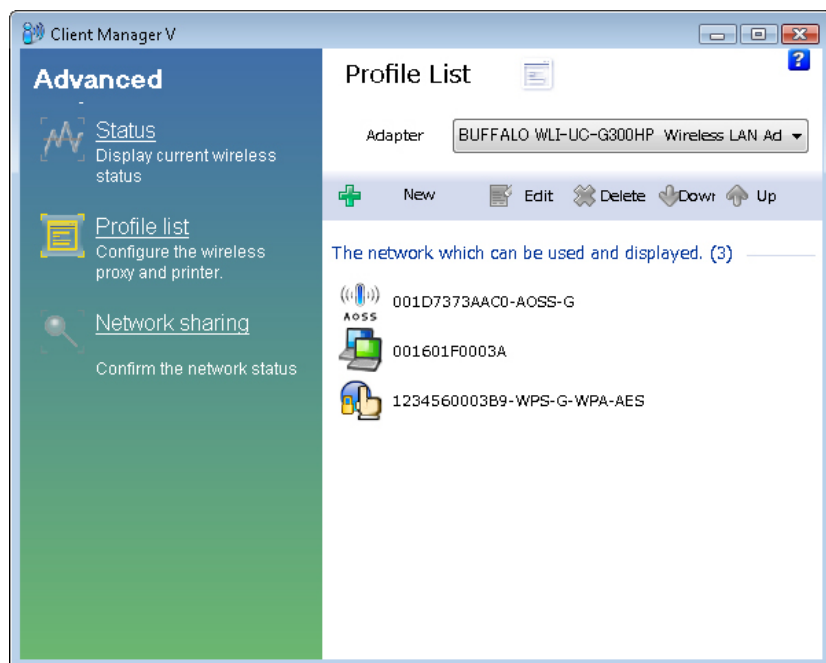
On the Wireless LAN Diagnostic screen, you can check signal strength and quality.



Parameter	Meaning
Adapter	Displays the name of the wireless client currently in use.
Connection status	<p>Displays signal strength (dBm), link rate (Mbps), and signal quality (%) at 1 minute intervals.</p> <p>The following restrictions apply.</p> <ul style="list-style-type: none"> <li>Some items may not be displayed depending on your wireless device.</li> <li>Signal strength and quality displays may vary depending on wireless devices.</li> </ul> <p>These graphs should not be used to compare different wireless devices. Use this information to check wireless status for the same wireless device.</p>
Usage of each channel	<p>This displays the signal strength of 11b/11g networks (2.4 GHz). 5 GHz (11a) signals are not displayed. The color expresses the signal strength of an access point. Closer to red means a stronger signal; closer to blue means a weaker signal.</p>

## Profile List

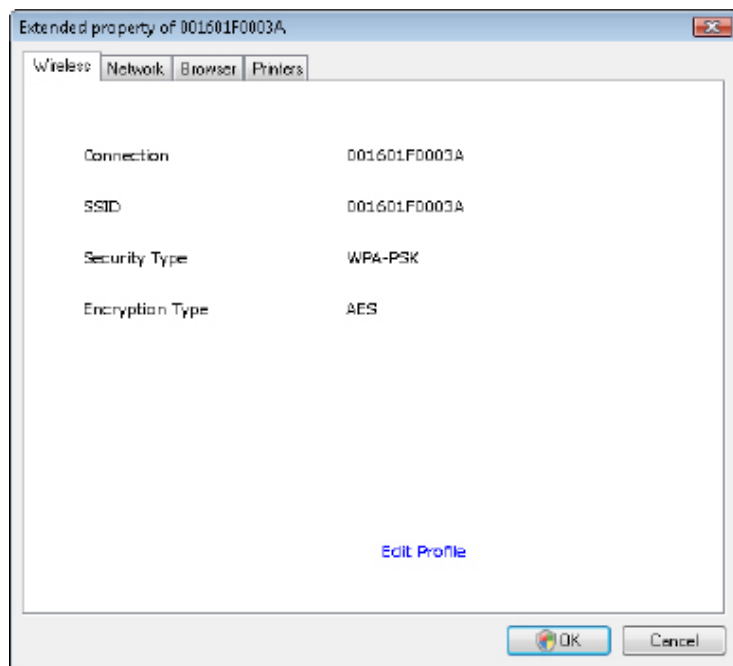
Create a new profile or edit an existing profile.



Parameter	Meaning
Adapter	Displays the name of the wireless client currently in use.
New	Create a new profile. Click this to display the Automatic Secure Setup and Advanced Setup screen (page 33).
Edit	Edit the selected profile. Click this to display the Extended properties (Wireless) screen (page 42).
Delete	Delete the selected profile.
Down	Lower the priority of the selected profile.
Up	Raise the priority of the selected profile.

## Wireless Properties

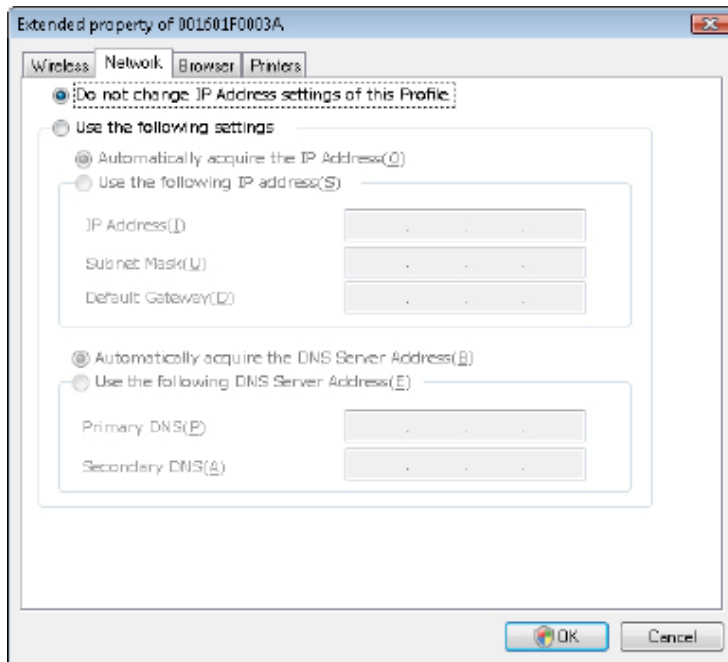
Current wireless settings.



Parameter	Meaning
Connection	Displays the current profile name.
SSID	Displays the SSID of the current connection.
Security Type	Displays the type of security used by the current connection.
Encryption Type	Displays the type of encryption used by the current connection.
Edit Profile	Click this to edit wireless settings.

## Network Properties

By default, your client's IP address is set automatically by DHCP. You may configure it manually from this screen.




---

### Parameter

### Meaning

Do not change IP Address settings of this Profile

Select to keep your current TCP/IP network setting without any changes. This is the recommended setting.

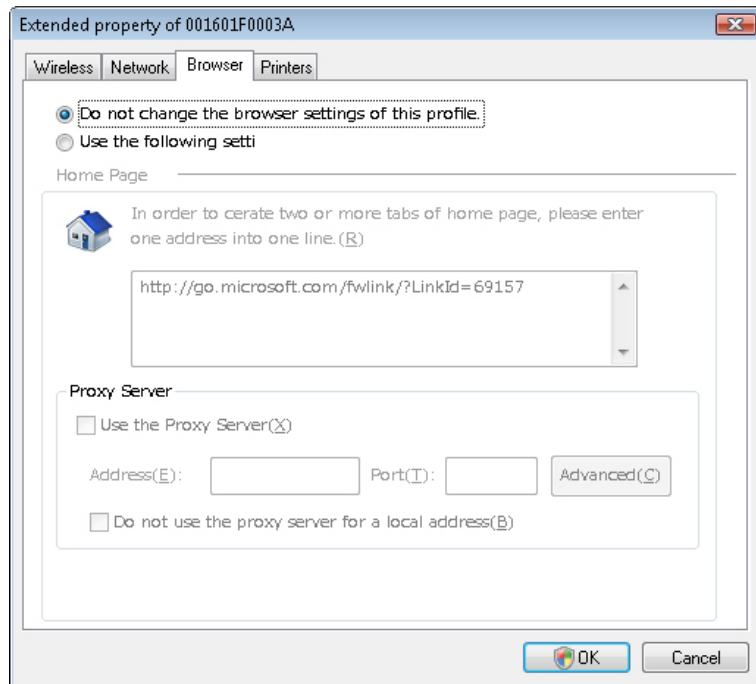
Use the following settings

Select this option to change your TCP/IP network settings. For expert users only.

---

## Browser Properties

Configure Internet Explorer settings for wireless connections.




---

### Parameter

### Meaning

Do not change the browser settings of this Profile

Select to keep the current Internet Explorer settings.

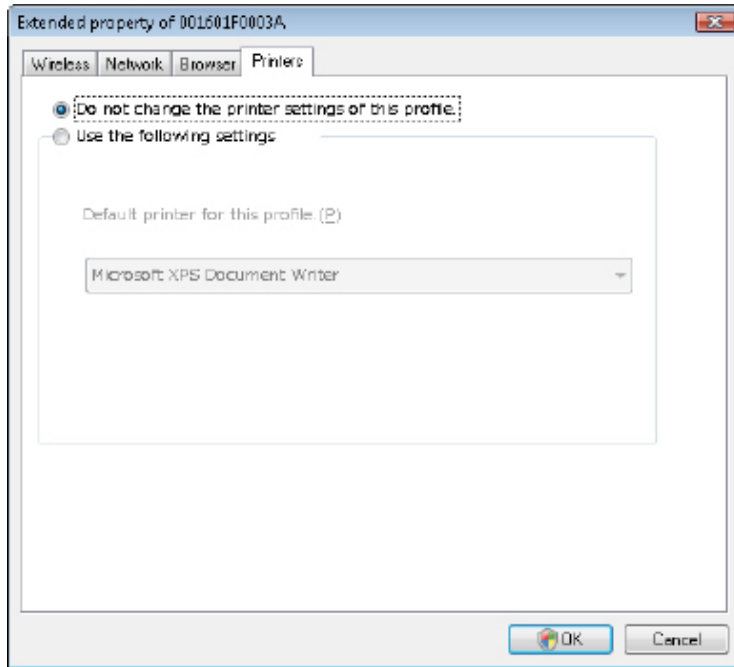
Use the following settings

Select this option to configure the Internet Explorer Home Page and Proxy Server settings while connected wirelessly.

---

## Printer Properties

Configure the printer used while connected to an access point wirelessly.



---

Parameter	Meaning
-----------	---------

---

Do not change the printer settings of this Profile	Select to keep your current printer settings.
--	---

Use the following settings	Select to use a different default printer while connected wirelessly.
----------------------------	---

---

## Using Client Manager 3 with Windows XP / 2000

---

- When you install Client Manager, it is added to your Startup folder and will automatically start with Windows. To launch Client Manager manually, click [Start] > [All Programs] > [BUFFALO] > [AirStation Utility] > [ClientManager 3] .
- Right click on the Client Manager icon in the system tray and click [Exit] to close Client Manager.

The Client Manager icon will change appearance according to its connection status:



: No wireless client installed



: Not connected to an access point



: Transmitting to an access point with TKIP/AES encryption



: Transmitting to an access point with WEP, or not encrypted



: Transmitting in ad-hoc mode (not supported with this wireless client)



: Authenticating

## Status

The Status screen displays the current connection status.



Parameter	Meaning
Profile	Current connection profile name.
SSID	SSID of the currently connected access point.
Adapter Name	Name ame of the wireless client currently in use.
Network Type	Current network mode.
Transmission Speed	Current transmission speed.
Channel	Current wireless channel.
Security	Displays whether security is currently enabled or not.
IP Address	The IP address assigned to this unit.



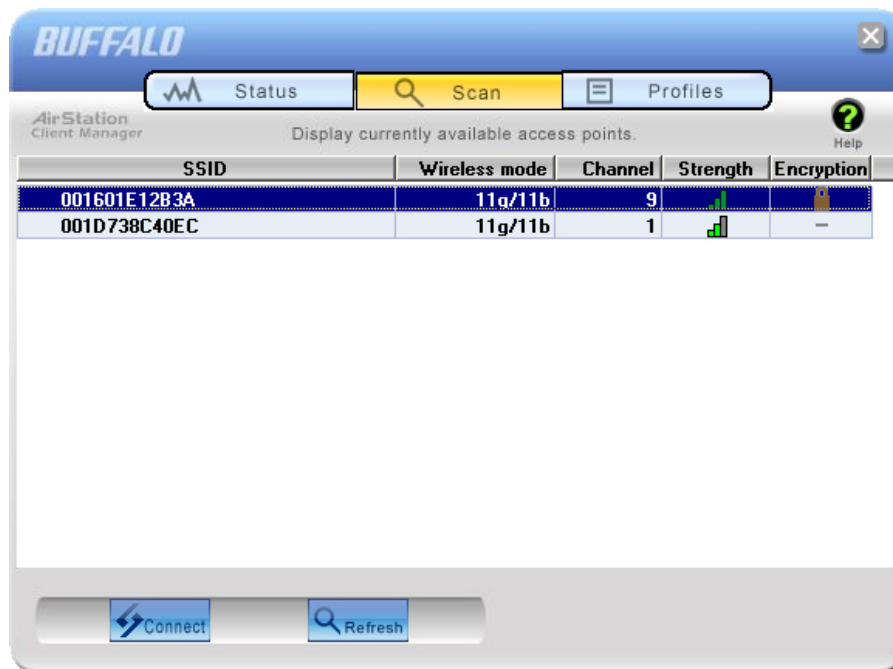
---

<b>Parameter</b>	<b>Meaning</b>
MAC Address	MAC address of this unit.
Duration	Elapsed duration of the current wireless connection.
Signal Strength	Current signal strength.
Reconnect	Click to reconnect the most recent connection.

---

## Scan

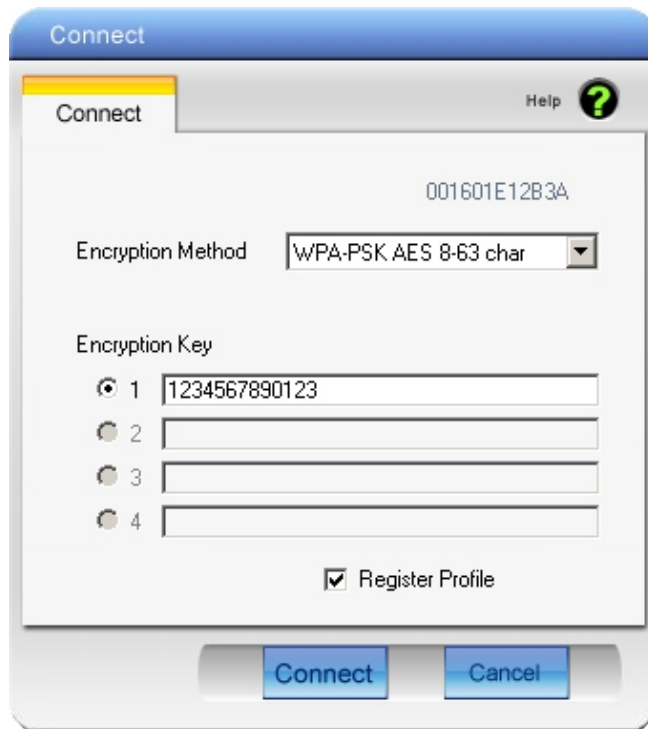
Scan and display nearby access points.



Parameter	Meaning
SSID	SSID of access point.
Wireless mode	Type of wireless network (such as 11a or 11g)
Channel	Wireless channel of the access point.
Strength	Reception strength of each access point.
Encryption	Displays if security is used by the access point.
Connect	Click this to display the Connect screen (page 50).
Refresh	Click here to search for available access points again.

## Connect

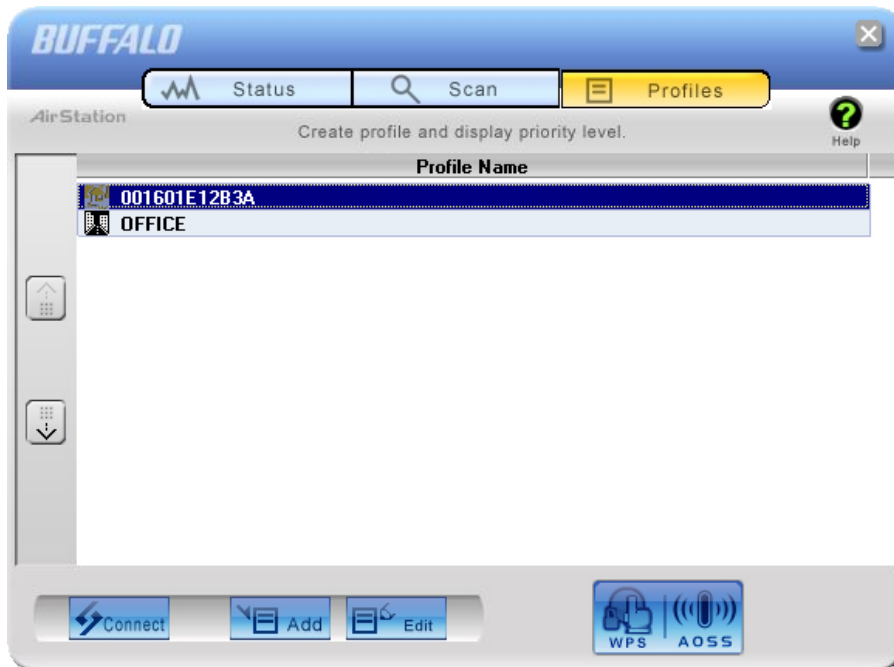
Configure connection to an access point.



Parameter	Meaning
Encryption Method	Type of encryption used by the access point.
Encryption Key	Enter the access point's encryption key (passphrase).
Register Profile	Check to register this connection as a profile.

## Profiles

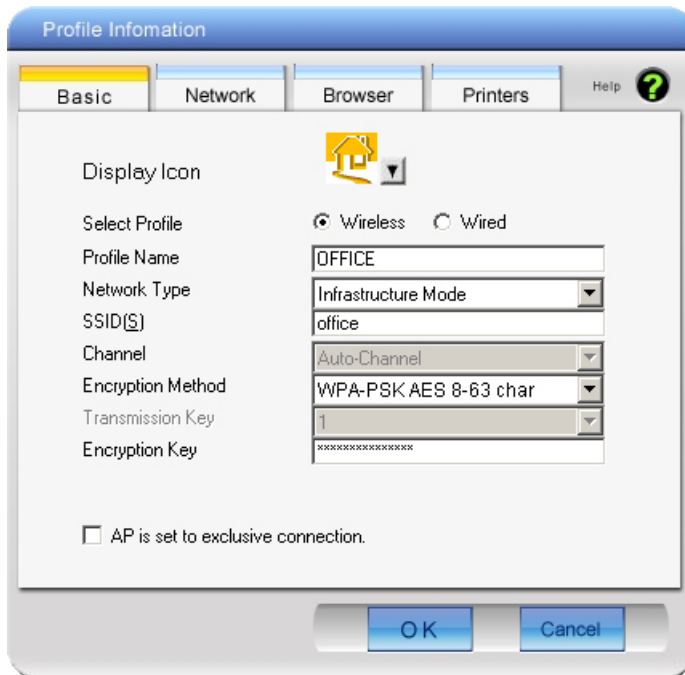
Connect to an access point or edit a profile.



Parameter	Meaning
Connect	Selecting a profile and clicking this button will connect to an access point using a stored profile.
Add	Click this to add a new profile. It will display the Profiles Information screen (page 52).
Edit	Click this to edit or delete information in a profile.
WPS AOSS	Click this button to have AOSS/WPS (PBC) automatically set security. After connection, a profile based on these settings will be created.
802.1x Profiles	This button is displayed when Client Manager is operating in Business Mode. Click to configure 802.1x authentication.

## Profile Information (Basic)

Configure your profile settings.



Parameter	Meaning
Display Icon	Select an icon from the drop-down menu to display for the profile.
Select Profile	Connection may be wireless or wired (Ethernet). For use with the AirStation, select [Wireless].
Profile Name	Enter a name for the profile.
Network Type	Select infrastructure mode to connect to an access point (recommended), or ad-hoc mode to connect directly to another wireless client.
SSID	Select the SSID of the wireless access point that the profile will connect to.
Channel	Choose the wireless channel. In Infrastructure Mode, the channel is automatically configured.

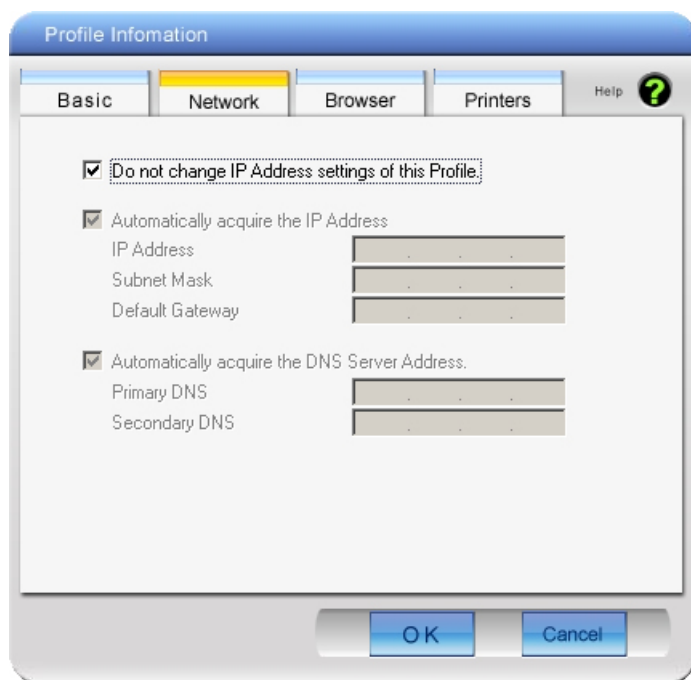
---

<b>Parameter</b>	<b>Meaning</b>
Encryption Method	Select the encryption method used by the wireless access point.
Transmission Key	If WEP is used for the Encryption Method, up to 4 passphrases may be entered. Enter at least one passphrase.
Encryption Key	Enter the encryption key (passphrase) for the access point.
AP is set to exclusive connection	Check if the access point's SSID is not broadcast.

---

## Profile Information (Network)

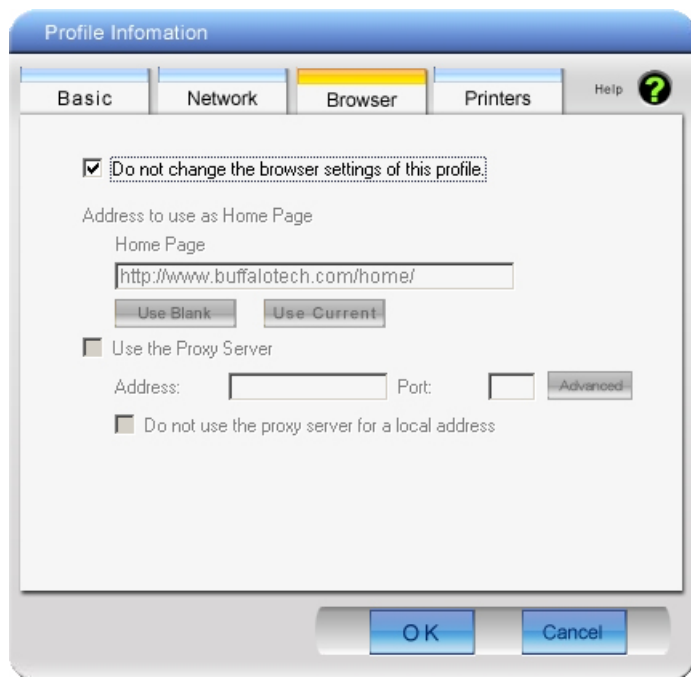
The profile's IP address and subnet mask may be manually assigned.



Parameter	Meaning
Do not change IP Address settings of this Profile	Check to keep using current TCP/IP network settings.
Automatically acquire the IP Address	Check to automatically acquire the IP address from a DHCP server when connecting wirelessly.
Automatically acquire the DNS Server Address	Check to automatically acquire the DNS server address from a DHCP server when connecting wirelessly.

## Profile Information (Browser)

Configure your Internet Explorer settings when connecting wirelessly.

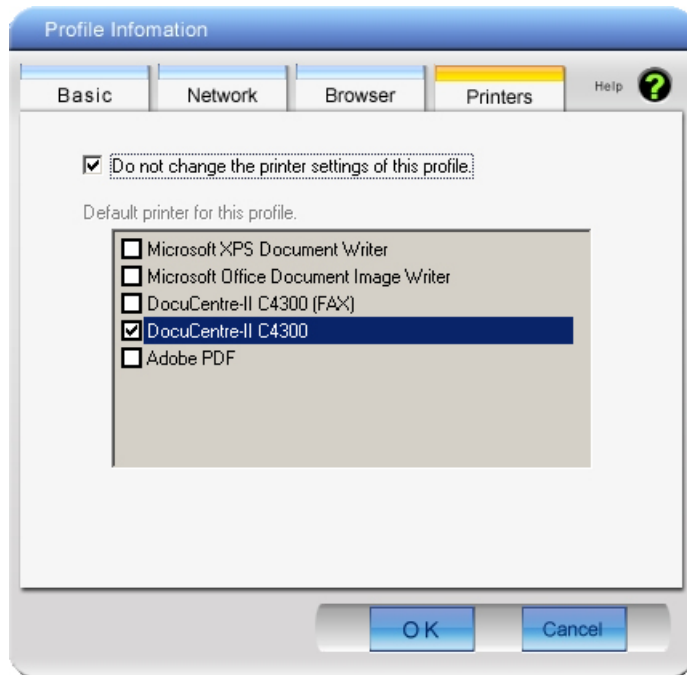


Parameter	Meaning
Do not change the browser settings of this Profile	Check to use current Internet Explorer settings when connecting wirelessly. Uncheck to use any of the settings below.
Address to use as Home Page	To use a different home page in Internet Explorer when connecting wirelessly, enter it here.
Use the Proxy Server	To use a proxy server for Internet Explorer when connecting wirelessly, enter its IP address and a port number and check the box.
Do not use the proxy server for a local address	If checked, the proxy server will not be used for local addresses.



## Profile Information (Printers)

Configure the printer that your computer uses when connected wirelessly.



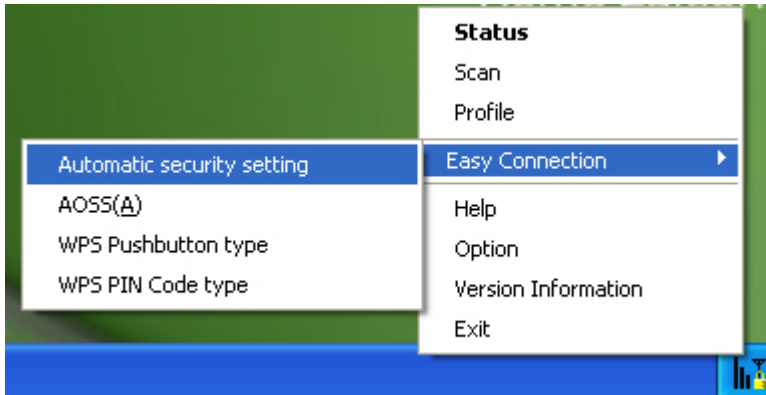
---

Parameter	Meaning
Do not change the printer settings of this Profile	Uncheck to use a different printer when connecting wirelessly.

---

## System Tray Menu

Right-click on the Client Manager icon in the system tray to display the following choices.



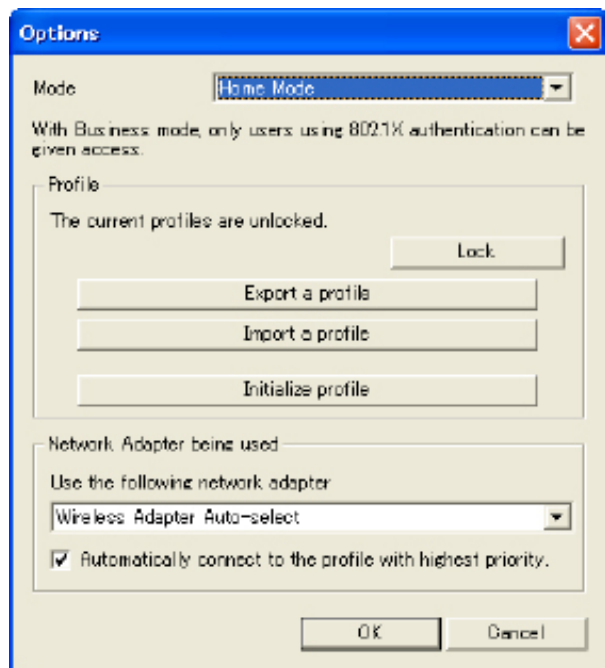
---

Parameter	Meaning
Status	Displays the Status screen (page 47).
Scan	Displays the Scan screen (page 49).
Profile	Displays the Profiles screen (page 51).
Easy Connection	Runs Automatic Secure Setup, using one of the following connection methods: AOSS, WPS(PBC), or WPS(PIN).
Help	Displays Client Manager Help.
Option	Displays the Options menu screen (page 58).
Version Information	Displays Client Manager version information.
Exit	Exits Client Manager.

---

## Option Menu

Configure Client Manager options.



Parameter	Meaning
Mode	Switch between Client Manager’s operating modes. If you select “ <i>Business Mode</i> ”, the button to configure 802.1x authentication appears on the Profiles screen (Page 51). “ <i>Home Mode</i> ” is recommended.
Lock	If you click this, you will not be able to add new profiles or edit existing profiles. To lock or unlock, enter the password (8 - 63 characters).
Export a profile	Click this to save the currently registered profile information. To save profile information, enter the password ( 8 - 63 characters).
Import a profile	Click this to import a saved profile into Client Manager. You’ll need to enter the password for the profile to continue.

---

<b>Parameter</b>	<b>Meaning</b>
Initialize profile	Click this to initialize profile information. Before initializing profile information, unlock the unit.
Use the following network adapter	Select a network adaptor to use in Client Manager. " <i>Wireless Adapter Auto-select</i> " is recommended for most users.
Automatically connect to the profile with highest priority	If checked, it will attempt to connect to the profile with highest priority as assigned on the Profile screen (page 51). Checked is recommended for most users.

---

# Chapter 5 - Troubleshooting

## The computer does not recognize the wireless adapter.

---

- Make sure this unit is connected to a USB port on your computer.
- If your computer has multiple USB ports, connect to a different USB port.
- Refer to page 6 "Install Wireless Drivers", and reinstall drivers for this unit.

## Cannot connect to the Network wirelessly.

---

- Refer to chapter 3 to connect this unit to an access point wirelessly.
- Configure the same SSID, encryption method, and encryption key for each wireless device. These settings must match those of your wireless access point.
- move your wireless devices closer to the access point.
- Restart your access point.

## You forgot the AP's SSID, Encryption key, or password.

---

Try to connect wirelessly with AOSS or WPS (PBC) if your access point supports either of them (chapter 3, page 13).

Ask your network administrator for SSID and encryption settings if the access point does not support AOSS/WPS (PBC).

## The link speed is slower than 300 Mbps (Maximum link speed is only 144 Mbps).

---

The default setting for 300 Mbps mode on the AirStation is "off". Refer to "300 Mbps Mode settings" on page 64 to turn on 300 Mbps mode.

## Other Tips

---

### Issue:

When using the Windows wireless connection manager, I cannot connect to my wireless router. I receive a "Cannot configure wireless network" error message when scanning for available wireless networks.

### Answer:

Another wireless client software may be installed on your computer that is taking control of the wireless client adapter away from the Windows connection manager. Either switch to the other software or use Add/Remove Programs to remove the conflicting client software. After rebooting, the Windows connection manager should be able to connect to the available wireless networks.

### Issue:

When I attempt to connect to my wireless router, I receive an error message indicating that security settings on my computer do not match the settings on the router.

### Answer:

Manually enter the correct security key and encryption type into the Windows connection manager.

To enter the security key in **Windows XP**: Go to the View Available Wireless Networks and select change Advanced Settings. Click on the Wireless Networks tab. There will be a list of networks to which you have previously connected. Highlight the network name (SSID) of the wireless router and select Properties. Enter the correct encryption key and select correct the encryption type as configured on the wireless router.

To enter the security key in **Windows 7 or Vista**: Go to the Connect to Network, right-click on the name of the network and click Properties. Highlight the name of your network and go to Properties. Enter the correct encryption key and select correct the encryption type as configured on the wireless router.

**Issue:**

What can I do if my wireless connection drops randomly or seems slow?

**Answer:**

There are many environmental factors that may affect this behavior. First, ensure the issue is not range related by locating the wireless router and the client in closer proximity and check whether the connection drops continue.

In some cases, interference from other wireless networks or sources such as 2.4 GHz wireless phones may impact performance. To work around this scenario, change the wireless channel used by your wireless router.

Log in to the wireless router with your browser. Click on the [Wireless Configuration]. If an Auto-Channel option is available, attempt to use this option to remedy the problem. If Auto-Channel is unavailable, manually select an alternate channel.

**Issue:**

Though I am able to successfully make a connection with my wireless router, I am unable to access the Internet with my web browser.

**Answer:**

First, power off the Cable or DSL modem, the wireless router, and then your computer. Pressing the power button or simply unplugging the devices can power off the modem and wireless router devices. Then after verifying that the modem is connected to the wireless router with a cable to the WAN port, power on the modem and wait two minutes. Turn on the wireless router and then the computer. Verify whether an Internet connection is available.

If, after these steps, an Internet connection is still unavailable, power off the Cable or DSL modem and computer again and directly connect your computer to the Cable or DSL modem with a cable between the computer and the port on the modem. Power on the modem and wait two minutes. Power on the computer and again check for an Internet connection.

If an Internet connection is not available with a direct connection to the computer, please call the Internet Service Provider who installed the modem.

If an Internet connection is available with a direct connection to the computer, please call our customer support line.

**Issue:**

Where can I download the latest drivers, firmware and instructions for my Buffalo wireless products?

**Answer:**

The latest drivers and firmware with installation instructions are available online at [www.buffalotech.com](http://www.buffalotech.com)



# Appendix

## 300 Mbps Mode settings

---

By default, the AirStation's 300 Mbps mode is disabled. Use the following procedure to enable it if desired.

1. Click [Start] > [All Programs] > [BUFFALO] > [AirStation Utility] > [AirStation 300Mbps Mode Setting] and launch the utility software.  
If you are using Windows 7 or Vista and see the message "A program needs your permission to continue", click [Continue].
2. When "300 Mbps Mode Wizard" is displayed, click [Next].
3. Click [Next].
4. When the message "Select wireless adapter" appears, select this unit and click [Next].
5. Select "Use 300Mbps Mode (40MHz)", and click [Next].
6. When the message "Setup of wireless adapter is complete" is displayed, click [Finish setup].

If you still cannot establish a 300 Mbps connection, check the settings for your access point.

## Specifications

<b>Wireless LAN Interface</b>	
Standard Compliance	IEEE802.11b / IEEE802.11g / IEEE802.11n
Transmission Method	Direct Sequence Spread Spectrum (DSSS), OFDM, MIMO
Frequency Range	2,412 - 2,462 MHz (Channels 1 - 11)
Transmission Rate	802.11b/g: 54, 48, 36, 24, 18, 12, 9, 6, 11, 5.5, 2, 1 Mbps 802.11n: 20 MHz BW (Long GI) 130, 117, 104, 78, 52, 39, 26, 13 Mbps (2 stream) 52, 58.5, 39, 26, 19.5, 13, 6.5 Mbps (1 stream) (Short GI) 144.4, 130, 115.5, 86.7, 57.8, 43.3, 28.9, 14.4 Mbps (2 stream) 65, 72.2, 57.8, 43.3, 28.9, 21.7, 14.4, 6.5 Mbps (1 stream) 40 MHz BW (Long GI) 270, 243, 216, 162, 108, 81, 54, 27 Mbps (2 stream) 135, 121.5, 108, 81, 54, 40.5, 27, 13.5 Mbps (1 stream) (Short GI) 300, 270, 240, 180, 120, 90, 60, 30 Mbps (2 stream) 150, 135, 120, 90, 60, 45, 30, 15 Mbps (1 stream)
Access Mode	Infrastructure Mode
Security	WPA2 (TKIP/AES), WPA-PSK (TKIP/AES), 128/64bit WEP
<b>Other</b>	
Power Supply	5.0 V bus-powered
Power Consumption	2500 mW (Max)
Dimensions	26 mm x 15 mm x 100 mm (1.0 x 0.6 x 9.91 cm.)
Weight	30 g (31.18 g.)
Operating Environment	0-40 C (32-104°F) , 20-80 % (non-condensing)

## Removing the device from the computer


---

### Windows 7, Vista, and Windows XP

If you use Windows 7, Vista, or Windows XP, just unplug the WLI-UC-G300HP from your computer.

### Windows 2000

If you use Windows 2000, follow the procedure described below.

1. Click the icon () displayed in the system tray.
2. Click [Safely remove BUFFALO WLI-UC-G300HP Wireless LAN Adapter].
3. Click [OK].
4. Unplug the WLI-UC-G300HP from your computer.

## Uninstalling the Software

---

To uninstall the software, follow the procedure described below.

1. Insert the AirNavigator CD. The AirNavigator Setup Wizard will launch automatically. If it does not, double-click [My Computer] > CD-ROM drive > [AirNavi.exe].
2. Click [Options].
3. Click [Uninstall software].
4. Follow the instructions on the screen to delete the utility software.

## Uninstalling the Drivers

---

To remove the AirStation wireless client drivers, follow the procedure described below.

1. Insert the AirNavigator CD. The AirNavigator Setup Wizard will launch automatically. If it does not, double-click [My Computer] > CD-ROM drive > [AirNavi.exe].
2. Click [Options].
3. Click [Remove Drivers].
4. Follow the instructions on the screen to remove drivers.

## TCP/IP Settings in Windows

---

### Windows 7

To configure TCP/IP in Windows 7, follow the procedure below.

- 1** Click [Start] > [Control Panel] > [Network and Internet].
- 2** Double click [Network and Sharing Center].
- 3** Click [Change Adapter Settings] on the left side menu.
- 4** Right click on [Local Area Connection], then click [Properties].
- 5** If the message “Windows needs your permission to continue” appears, click [Continue].
- 6** Select [Internet Protocol Version 4 (TCP/IPv4)] then click [Properties].
- 7** To have DHCP set your IP address settings automatically, check [Obtain an IP address automatically] and [Obtain DNS server address automatically].

To set your IP address settings manually, enter values for each settings. Example:

If the router’s IP address is 192.168.11.1, then

IP address	192.168.11.80
Subnet mask	255.255.255.0
Default gateway	192.168.11.1
Preferred DNS server	192.168.11.1
Alternate DNS server	blank

- 8** Click [OK].

## Windows Vista

To configure TCP/IP in Windows Vista, follow the procedure below.

- 1** Click [Start] > [Settings] > [Control Panel].
- 2** Double click [Network and Sharing Center].
- 3** Click [Manage network connections] on the left side menu.
- 4** Right click on [Local Area Connection], then click [Properties].
- 5** When the message [Windows needs your permission to continue], click [Continue].
- 6** Select [Internet Protocol Version 4 (TCP/IPv4)], then click [Properties].
- 7** To have DHCP set your IP address settings automatically, check [Obtain an IP address automatically] and [Obtain DNS server address automatically].

To set your IP address settings manually, enter values for each settings. Example:

If the router's IP address is 192.168.11.1, then	
IP address	192.168.11.80
Subnet mask	255.255.255.0
Default gateway	192.168.11.1
Preferred DNS server	192.168.11.1
Alternate DNS server	blank

- 8** Click [Close].

## Windows XP

To configure TCP/IP in Windows XP, follow the procedure below.

- 1** Click [Start] > [Settings] > [Control Panel].
- 2** Double click [Network].
- 3** Right click on [Local Area Connection], then click [Properties].
- 4** Select [Internet Protocol (TCP/IP)], then click [Properties].
- 5** To have DHCP set your IP address settings automatically, check [Obtain an IP address automatically] and [Obtain DNS server address automatically].

To set your IP address settings manually, enter values for each settings. Example:.

If the router's IP address is 192.168.11.1, then

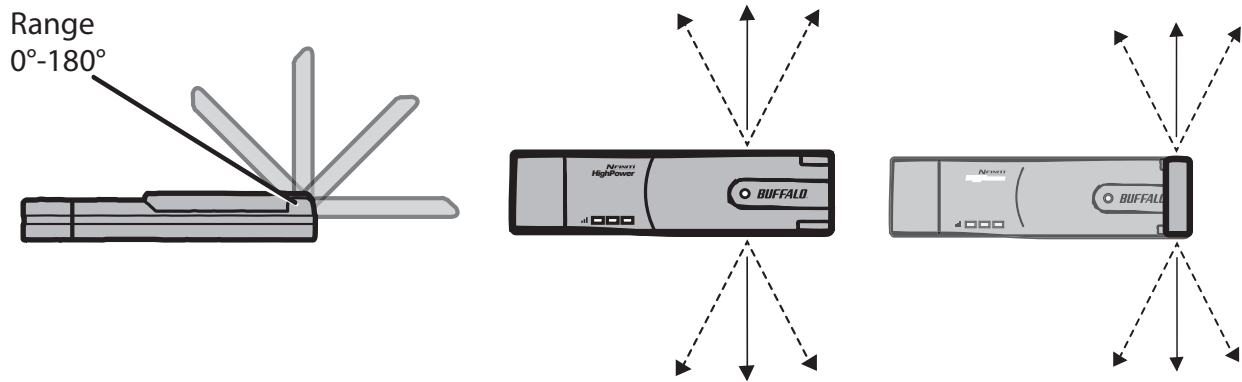
IP address	192.168.11.80
Subnet mask	255.255.255.0
Default gateway	192.168.11.1
Preferred DNS server	192.168.11.1
Alternate DNS server	blank

- 6** Click [Close].

## Antenna

---

The WLI-UC-G300HP has a flexible antenna that may be used in different positions. Adjust the angle for the best signal as needed. Turning the unit so that the wireless AP is directly to one side of the WLI-UC-G300HP will probably give the strongest signal.



## **FCC / CE / R&TTE Information**

---

### **Federal Communication Commission Interference Statement**

This equipment has been tested and found to comply with the limits for a Class B digital device, pursuant to Part 15 of the FCC Rules. These limits are designed to provide reasonable protection against harmful interference in a residential installation. This equipment generates, uses and can radiate radio frequency energy and, if not installed and used in accordance with the instructions, may cause harmful interference to radio communications. However, there is no guarantee that interference will not occur in a particular installation. If this equipment does cause harmful interference to radio or television reception, which can be determined by turning the equipment off and on, the user is encouraged to try to correct the interference by one of the following measures:

- Reorient or relocate the receiving antenna.
- Increase the separation between the equipment and receiver.
- Connect the equipment into an outlet on a circuit different from that to which the receiver is connected.
- Consult the dealer or an experienced radio/TV technician for help.

### **FCC Caution:**

Any changes or modifications not expressly approved by the party responsible for compliance could void the user's authority to operate this equipment.

This device complies with Part 15 of the FCC Rules. Operation is subject to the following two conditions: (1) This device may not cause harmful interference, and (2) this device must accept any interference received, including interference that may cause undesired operation.

### **Important Note - FCC Radiation Exposure Statement:**

This equipment complies with FCC radiation exposure limits set forth for an uncontrolled environment. End users must follow the specific operating instructions for satisfying RF exposure compliance. To maintain compliance with FCC RF exposure compliance requirements, please follow operation instruction as documented in this manual.

This transmitter must not be co-located or operating in conjunction with any other antenna or transmitter.

SAR compliance has been established in typical laptop computer(s) with USB slot, and product could be used in typical laptop computer with USB slot. Other application like handheld PC or similar device has not been verified and may not compliance with related RF exposure rule and such



use shall be prohibited.

The availability of some specific channels and/or operational frequency bands are country dependent and are firmware programmed at the factory to match the intended destination. The firmware setting is not accessible by the end user.

### **Industry Canada Statement:**

This device complies with RSS-210 of the Industry Canada Rules. Operation is subject to the following two conditions:

- (1) This device may not cause harmful interference, and
- (2) this device must accept any interference received, including interference that may cause undesired operation.

### **Important Note - Radiation Exposure Statement:**

This equipment complies with Canada radiation exposure limits set forth for an uncontrolled environment. End users must follow the specific operating instructions for satisfying RF exposure compliance. To maintain compliance with Canada RF exposure compliance requirements, please follow operation instruction as documented in this manual.

This transmitter must not be co-located or operating in conjunction with any other antenna or transmitter.

### **Taiwan:**

SAR compliance has been established in typical laptop computer(s) with a CardBus slot, and product could be used in typical laptop computer with a CardBus slot. Other application like handheld PC or similar device has not been verified, may not comply with related RF exposure rules, and such use shall be prohibited.

### **Europe - EU Declaration of Conformity:**

This device complies with the essential requirements of the R&TTE Directive 1999/5/EC. The following test methods have been applied in order to prove presumption of conformity with the essential requirements of the R&TTE Directive 1999/5/EC:

EN60950-1: (2006)

Safety of Information Technology Equipment

EN62311 : (2008)

Assessment of electronic and electrical equipment related to human exposure restrictions for electromagnetic fields (0 Hz – 300 GHz)

EN 300 328 V1.7.1: (2006-10)

Electromagnetic compatibility and Radio spectrum Matters (ERM); Wideband Transmission systems; Data transmission equipment operating in the 2,4 GHz ISM band and using spread spectrum modulation techniques; Harmonized EN covering essential requirements under article 3.2 of the R&TTE Directive

EN 301 489-1 V1.8.1: (2008-04)

Electromagnetic compatibility and Radio Spectrum Matters (ERM); ElectroMagnetic Compatibility (EMC) standard for radio equipment and services; Part 1: Common technical requirements

EN 301 489-17 V2.1.1 (2009-05)

Electromagnetic compatibility and Radio spectrum Matters (ERM); ElectroMagnetic Compatibility (EMC) standard for radio equipment; Part 17: Specific conditions for Broadband Data Transmission Systems

This device is a 2.4 GHz wideband transmission system (transceiver), intended for use in all EU member states and EFTA countries, except in France and Italy where restrictive use applies.

In Italy the end-user should apply for a license at the national spectrum authorities in order to obtain authorization to use the device for setting up outdoor radio links and/or for supplying public access to telecommunications and/or network services.

This device may not be used for setting up outdoor radio links in France and in some areas the RF output power may be limited to 10 mW EIRP in the frequency range of 2454 – 2483.5 MHz. For detailed information the end-user should contact the national spectrum authority in France.

# CE 0560 ⚠

## Česky [Czech]

Buffalo Technology Inc. tímto prohlašuje, že tento WLI-UC-G300HP / WLI-UC-G300HP-V1 je ve shodě se základními požadavky a dalšími příslušnými ustanoveními směrnice 1999/5/ES.

## Dansk [Danish]

Undertegnede Buffalo Technology Inc. erklærer herved, at følgende udstyr WLI-UC-G300HP / WLI-UC-G300HP-V1 overholder de væsentlige krav og øvrige relevante krav i direktiv 1999/5/EF.

## Deutsch [German]

Hiermit erklärt Buffalo Technology Inc., dass sich das Gerät WLI-UC-G300HP / WLI-UC-G300HP-V1 in Übereinstimmung mit den grundlegenden Anforderungen und den übrigen einschlägigen Bestimmungen der Richtlinie 1999/5/EG befindet.

## Eesti [Estonian]

Käesolevaga kinnitab Buffalo Technology Inc. seadme WLI-UC-G300HP / WLI-UC-G300HP-V1 vastavust direktiivi 1999/5/EÜ põhinõuetele ja nimetatud direktiivist tulenevatele teistele asjakohastele sätetele.

## English

Hereby, Buffalo Technology Inc., declares that this WLI-UC-G300HP / WLI-UC-G300HP-V1 is in compliance with the essential requirements and other relevant provisions of Directive 1999/5/EC.

## Español [Spanish]

Por medio de la presente Buffalo Technology Inc. declara que el WLI-UC-G300HP / WLI-UC-G300HP-V1 cumple con los requisitos esenciales y cualesquiera otras disposiciones aplicables o exigibles de la Directiva 1999/5/CE.

## Ελληνική [Greek]

ΜΕ ΤΗΝ ΠΑΡΟΥΣΑ Buffalo Technology Inc. ΔΗΛΩΝΕΙ ΟΤΙ WLI-UC-G300HP / WLI-UC-G300HP-V1 ΣΥΜΜΟΡΦΩΝΕΤΑΙ ΠΡΟΣ ΤΙΣ ΟΥΣΙΩΔΕΙΣ ΑΠΑΙΤΗΣΕΙΣ ΚΑΙ ΤΙΣ ΛΟΙΠΕΣ ΣΧΕΤΙΚΕΣ ΔΙΑΤΑΞΕΙΣ ΤΗΣ ΟΔΗΓΙΑΣ 1999/5/ΕΚ.

## Français [French]

Par la présente WLI-UC-G300HP / WLI-UC-G300HP-V1 déclare que l'appareil [type d'appareil] est conforme aux exigences essentielles et aux autres dispositions pertinentes de la directive 1999/5/CE.

Italiano [Italian]

Con la presente Buffalo Technology Inc. dichiara che questo WLI-UC-G300HP / WLI-UC-G300HP-V1 è conforme ai requisiti essenziali ed alle altre disposizioni pertinenti stabilite dalla direttiva 1999/5/CE.

Latviski [Latvian]

Ar šo Buffalo Technology Inc. deklarē, ka WLI-UC-G300HP / WLI-UC-G300HP-V1 atbilst Direktīvas 1999/5/EK būtiskajām prasībām un citiem ar to saistītajiem noteikumiem.

Lietuvių [Lithuanian]

Šiuo Buffalo Technology Inc. deklaruoja, kad šis WLI-UC-G300HP / WLI-UC-G300HP-V1 atitinka esminius reikalavimus ir kitas 1999/5/EB Direktyvos nuostatas.

Nederlands [Dutch]

Hierbij verklaart Buffalo Technology Inc. dat het toestel WLI-UC-G300HP / WLI-UC-G300HP-V1 in overeenstemming is met de essentiële eisen en de andere relevante bepalingen van richtlijn 1999/5/EG.

Malti [Maltese]

Hawnhekk, Buffalo Technology Inc., jiddikjara li dan WLI-UC-G300HP / WLI-UC-G300HP-V1 jikkonforma mal-ħtiġijiet essenzjali u ma provvedimenti oħrajn relevanti li hemm fid-Dirrettiva 1999/5/EC.

Magyar [Hungarian]

Alulírott, Buffalo Technology Inc. nyilatkozom, hogy a WLI-UC-G300HP / WLI-UC-G300HP-V1 megfelel a vonatkozó alapvető követelményeknek és az 1999/5/EC irányelv egyéb előírásainak.

Polski [Polish]

Niniejszym Buffalo Technology Inc. oświadcza, że WLI-UC-G300HP / WLI-UC-G300HP-V1 jest zgodny z zasadniczymi wymogami oraz pozostałymi stosownymi postanowieniami Dyrektywy 1999/5/EC.

Português [Portuguese]

Buffalo Technology Inc. declara que este WLI-UC-G300HP / WLI-UC-G300HP-V1 está conforme com os requisitos essenciais e outras disposições da Directiva 1999/5/CE.

Slovensko [Slovenian]

Buffalo Technology Inc. izjavlja, da je ta WLI-UC-G300HP / WLI-UC-G300HP-V1 v skladu z bistvenimi zahtevami in ostalimi relevantnimi določili direktive 1999/5/ES.

Slovensky [Slovak]

Buffalo Technology Inc. týmto vyhlasuje, že WLI-UC-G300HP / WLI-UC-G300HP-V1 spĺňa základné požiadavky a všetky príslušné ustanovenia Smernice 1999/5/ES.

Suomi [Finnish]

Buffalo Technology Inc. vakuuttaa täten että WLI-UC-G300HP / WLI-UC-G300HP-V1 tyyppinen laite on direktiivin 1999/5/EY oleellisten vaatimusten ja sitä koskevien direktiivin muiden ehtojen mukainen.

Svenska [Swedish]

Härmed intygar Buffalo Technology Inc. att denna WLI-UC-G300HP / WLI-UC-G300HP-V1 står i överensstämmelse med de väsentliga egenskapskrav och övriga relevanta bestämmelser som framgår av direktiv 1999/5/EG.

## **根據 NCC 低功率電波輻射性電機管制辦法：**

### **第十二條：**

經型式認證合格之低功率射頻電機，非經許可，公司、商號或使用者均不得擅自變更頻率、加大功率或變更原設計之特性及功能。

### **第十四條：**

低功率射頻電機之使用不得影響飛航安全及干擾合法通信；經發現有干擾現象時，應立即停用，並改善至無干擾時方得繼續使用。前項合法通信，指依電信法規定作業之無線電通信。低功率射頻電機須忍受合法通信或工業、科學及醫療用電波輻射性電機設備之干擾。

이 기기는 가정용으로 전자파적합등록을 한 기기로서 주거지역에서는 물론 모든 지역에서 사용할 수 있습니다 .

해당 무선설비는 전파혼신 가능성이 있으므로 인명안전과 관련된 서비스는 할 수 없음

법에 의해 전방향 전파발사 및 동일한 정보를 동시에 여러 곳으로 송신하는 점 - 대 - 다지 점 서비스에의 사용은 금지되어 있습니다 .

## Environmental Information

---

- The equipment that you have purchased has required the extraction and use of natural resources for its production.
- The equipment may contain hazardous substances that could impact health and the environment.
- In order to avoid the dissemination of those substances in our environment and to diminish the pressure on the natural resources, we encourage you to use the appropriate take-back systems.
- The take-back systems will reuse or recycle most of the materials of your end life equipment in a sound way.
- The crossed-out wheeled bin symbol invites you to use those systems.



- If you need more information on the collection, reuse and recycling systems, please contact your local or regional waste administration.

## Warranty

---

Buffalo Technology (Buffalo Inc.) products come with a two-year limited warranty from the date of purchase. Buffalo Technology (Buffalo Inc.) warrants to the original purchaser the product; good operating condition for the warranty period. This warranty does not include non-Buffalo Technology (Buffalo Inc.) installed components. If the Buffalo product malfunctions during the warranty period, Buffalo Technology/(Buffalo Inc.) will, replace the unit, provided the unit has not been subjected to misuse, abuse, or non-Buffalo Technology/(Buffalo Inc.) authorized alteration, modifications or repair.

All expressed and implied warranties for the Buffalo Technology (Buffalo Inc) product line including, but not limited to, the warranties of merchantability and fitness of a particular purpose are limited in duration to the above period.

Under no circumstances shall Buffalo Technology/(Buffalo Inc.) be liable in any way to the user for damages, including any lost profits, lost savings or other incidental or consequential damages arising out of the use of, or inability to use the Buffalo products.

In no event shall Buffalo Technology/(Buffalo Inc.) liability exceed the price paid for the product from direct, indirect, special, incidental, or consequential damages resulting from the use of the product, its accompanying software, or its documentation. Buffalo Technology (Buffalo Inc.) does not offer refunds for any product.

@ 2003-2010 Buffalo Technology (Buffalo, Inc.)