

Quick Setup Guide

TeraStation HD-HTGL/R5



BUFFALOTM

Unpacking and Setup

Open TeraStation's shipping container and carefully unpack its contents. The carton should contain the following items:

▶ Main Unit (TeraStation)	1
▶ Ethernet Cable	1
▶ Power Cable	1
▶ TeraNavigator Installation CD	1
▶ Quick Setup Guide (this manual)	1
▶ Warranty Card	1

If any items are missing or damaged, please contact the reseller or retailer from which the product was purchased.

Step 1: Connect your Cables

Plug TeraStation's power cord and Ethernet cable into the back of the TeraStation. Then, connect the power plug to a power outlet. Make sure that the power switch on the rear of the TeraStation is in the **ON** position, with the "I" symbol pressed down.



Plug the other end of the Ethernet cable into a hub, switch, or router on the network.



Press the power button on the front of TeraStation to turn TeraStation on.



Step 2: Check your Connection

Check the LINK/ACT LED on the front of the TeraStation. If it's lit, then your TeraStation is connected to your network. Please turn to *page 4* to continue setup.



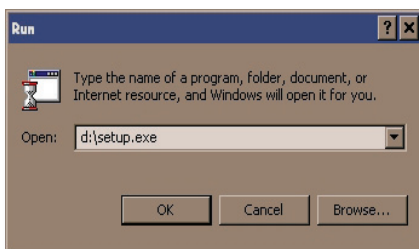
If the LINK/ACT LED on the front of TeraStation is **not** lit, your TeraStation is not properly connected to your network. Make sure that:

- *Both TeraStation and the hub, switch, or PC are powered on,*
- *The Ethernet cable is securely fastened to both devices, and*
- *The Ethernet cable is not damaged. To verify, try using another Ethernet cable.*

If problems persist, contact our technical support.

Step 3: Using the Client Utility

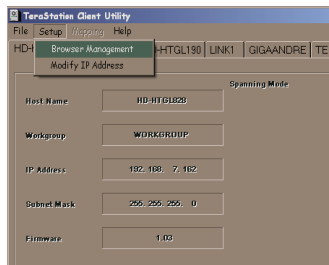
Insert the TeraNavigator CD into a PC's CD-ROM drive. If Setup doesn't launch automatically, you can launch it manually by clicking **Start**, then **Run....** When the Run dialog opens, type **d:\setup.exe** (where "d" is the drive letter of the CD-ROM drive). Press **OK** to continue.



TeraNavigator should now be running.

Press the **Install Client Utility** button, and then **Start**. When installation is finished, press **Launch**.

Each TeraStation on the network will have a tab in the client utility. Make sure that your Terastation's tab is selected, click **Setup** and choose **Browser Management**.



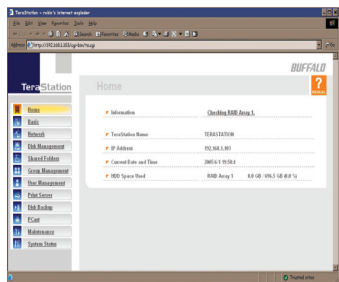
Step 4: TeraStation Configuration Utility

This login prompt will appear.

The user name is **admin**.

The password is **password**, until you change it.

Press **OK** when finished.



You're now logged in. Bookmark this page in your browser for easy future access. For detailed explanations of each menu and setting, refer to your TeraStation manual, available on your TeraNavigator CD.

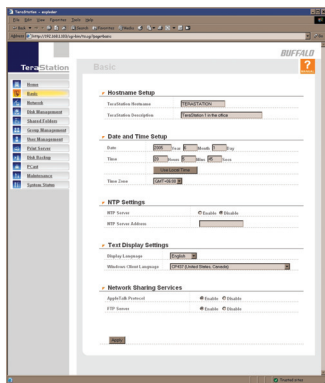
Click on the **Basic** button on the left side.

Here on the **Basic** page, begin by changing the name of your TeraStation in the TeraStation Hostname field. A friendly, easy-to-remember name is recommended. The name cannot contain any spaces or special characters.

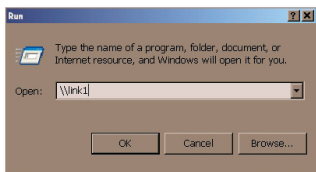
Enter a short description of your TeraStation in the **TeraStation Description** field. You'll then see this description in Network Neighborhood.

Make sure that the date and time are correct in **Date and time** setup. To synchronize clock settings with your computer, press **Use Local time**.

Press **Apply** at the bottom of the page when desired fields are completed.



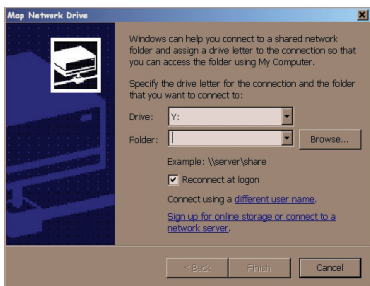
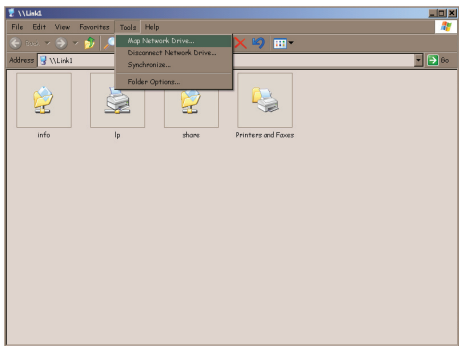
Step 6: Map a Driveletter to your Share



To access your TeraStation's data, it's convenient to have the TeraStation's share (a folder you can store data in) mapped to a drive letter. Begin by clicking **Start** and then **Run....** In the Run dialog box, type **\\TeraStation_Name** where TeraStation_Name is the

friendly, easy-to-remember name that you entered into the **TeraStation Hostname** field on page 5. Press **OK** to continue.

TeraStation's root directory will appear. You'll see all of the configured folders, including **share**, the preconfigured share folder that we're going to map a drive letter to. From the pull-down menu, click **Tools**, and then **Map Network Drive**.



Select the drive letter you want to map **share** to from the **Drive:** list box. In the **Folder:** field, enter **\\TeraStation_Name\share**, where TeraStation_Name is the friendly, easy-to-remember name you gave your TeraStation on page 5. If you set up other shares on your TeraStation, you may map them by substituting

their share name for "share" in the **Folder:** field. You can also browse for a shared folder by pressing the **Browse** button and searching through the **Entire Network** and then the **Microsoft Windows Network**. Check the **Reconnect at logon** checkbox to have Windows connect to your mapped drive every time it starts. When finished, press the **Finish** button.

Congratulations! Your TeraStation is set up. Please see the ***TeraStation User Manual*** for more help and configuration options.

Note on RAID arrays:

TeraStation uses **RAID** (“Redundant Array of Independent Disks”) technology to control the four hard drives in your TeraStation. RAID may be configured several ways:

RAID Spanning - All four drives are combined into one large drive, giving the maximum capacity for your TeraStation. RAID Spanning is efficient, but has no redundancy. If one hard drive fails, all data on the TeraStation is lost.

RAID 1 (mirroring) - Hard drives (or spanned pairs of hard drives) are arranged in mirrored pairs. Each half of the pair reads and writes exactly the same data. This costs you half of the total capacity of your TeraStation, but provides excellent redundancy. If a hard drive fails, the mirror set continues to operate, allowing you to work on normally. You may replace the damaged or defective drive at any time, and normal RAID 1 mirroring will then be automatically restored.

RAID 5 (parity) - All drives in a RAID 5 array reserve part of their data space for parity information, allowing all data to be recovered if a single drive fails. The parity information takes up about one hard drive’s worth of space, so if you set up all four drives in the TeraStation as a RAID 5 array, your usable capacity will be about 3/4 of the total capacity of the TeraStation. RAID 5 is an excellent compromise between efficiency and security. If a single drive fails, no data is lost. After the damaged or defective drive is replaced, your TeraStation will automatically restore all data on the new drive and resume normal RAID 5 operation. This is how your TeraStation is set up out of the box.

Out of the box, your TeraStation is configured with RAID 5. This means that you’ll only be able to use about 3/4 of the total capacity of your TeraStation, but your data will be much safer than it would be without fault tolerance. If you wish to use a different type of RAID, instructions for changing your RAID settings are in the TeraStation manual, available on your TeraNavigator CD.

LAN Standards:	IEEE 802.3u 100BASE-TX; IEEE 802.3 10BASE-T
Transmission:	1000/100Mbps/10 Mbps, 1000BASE-T: 8B1Q4, PAM5, X 4B/5B, MLT-3; 10BASE-T Manchester Coding
Access Media:	CSMA/CD
Media Interface:	RJ-45
USB Standard:	USB 2.0 Hi-Speed (HS) Full-Speed (FS) Low-Speed (LS)
USB Connector:	USB A Connector (4)
Data Transmission Speed:	Max: 480 Mbps (HS Mode) Max: 12 Mbps (FS Mode)
Electric Current:	120V A/C
Power Consumption:	17W Maximum
Dimensions:	6.6" x 8.7" x 9.5" (168 x 221 x 241 mm.)
Weight:	15.8 LB. (5.4 kg.)

Technical Support

Buffalo Technology offers free technical support (24/7 Phone Support in North America, Email Support in Europe). Please see the back page of this quick start guide for the contact information. Please also visit the web site at <http://www.buffalotech.com>

FCC Warning

This device complies with part 15 of the FCC Rules. Operation is subject to the following two conditions: (1) This device may not cause harmful interference, and (2) this device must accept any interference received, including interference that may cause undesired operation.

BUFFALOTM

<http://www.buffalotech.com>

USA/Canada Technical Support is available 24 hours a day, 7 days a week

Toll-Free: 866-752-6210

email: info@buffalotech.com

Europe Technical Support is available between 9am-6pm (Monday-Thursday) (GMT)
and 9am-4:30pm on Fridays.

email: helpdesk@buffalo-technology.ie

©2005, Buffalo Technology (USA), Inc.