

# **User Manual**

## **LS-LGL LinkStation**



# ***BUFFALO***<sup>TM</sup>

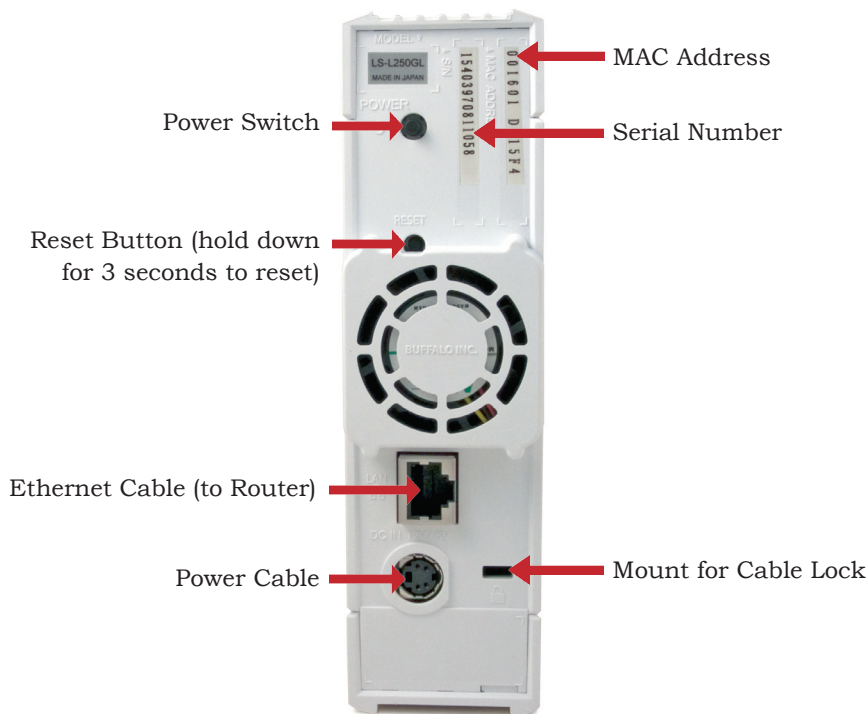
Congratulations on your new LinkStation network attached storage device (NAS). This user manual is intended to assist you in configuring it.

Because we're constantly updating our product, the images and text in this manual may vary slightly from the images and text displayed by your LinkStation. These changes are minor and should not affect the ease of setup adversely. As time passes, future user interfaces, updated software, and later versions of this manual may be freely available for download at our web site: *[www.buffalotech.com](http://www.buffalotech.com)*.

If you run into difficulties or need additional help, feel free to contact our technical support. Contact information for Buffalo Technology and our technical support is available on pages 17 and 18.

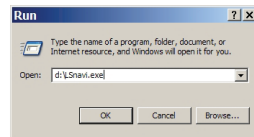
Back Panel .....	4
Installing on a PC.....	5
Using your LinkStation with a PC .....	8
Using your LinkStation with a Mac .....	10
Client Utility .....	14
Technical Specifications .....	15
Contact Information (USA) .....	16
Contact Information (Europe) .....	17
GPL Information .....	18

## Back Panel Layout



To begin, insert the LinkNavigator CD into your computer's CD-ROM drive.

Setup should automatically launch. If it does not, manually launch setup by clicking *Start* and selecting the *Run...* option. When the *Run* dialog opens, type **d:\LSnavi.exe** (where d is the drive letter of your CD-ROM drive). Press *OK* to continue.



If you are installing the software on a Mac, open the CD and click *LinkNavigator* to begin installation.

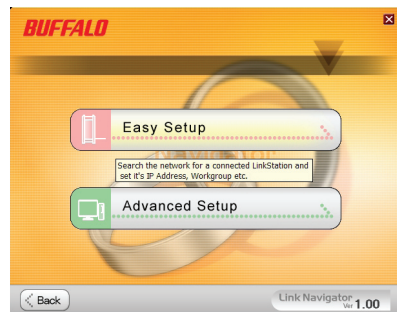




Press the *Begin Installation* button.

If you're installing on a PC, click on *Easy Setup* (the pink, upper button). Mac users can skip this step.

Click *Next* to step through the installation.



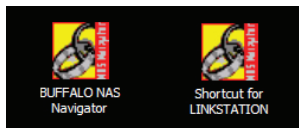


Follow the directions on each screen and continue pressing *Next* at the bottom of each window to step through the installation.

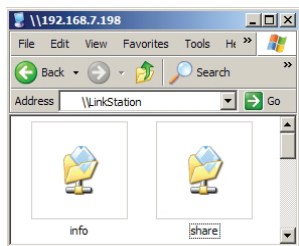
When installation is complete, you may close the installation window.



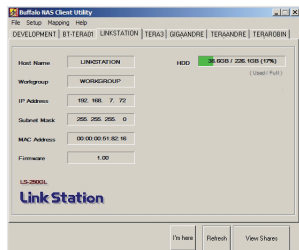
# Using your LinkStation with a Windows PC



Two new icons will be on your desktop: *Shortcut for LinkStation* and *Buffalo NAS Navigator*.



Clicking *Shortcut for LinkStation* takes you directly to the folders on your LinkStation. *Share* is the main folder that you can put files and folders in. *Info* contains a copy of your user manual.



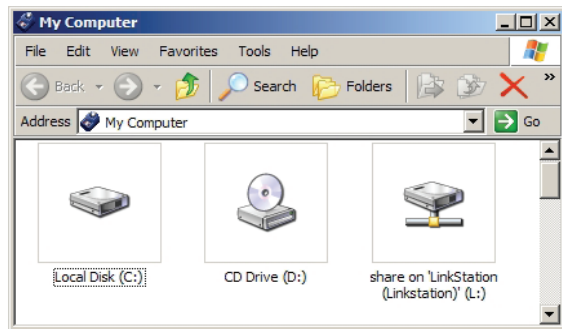
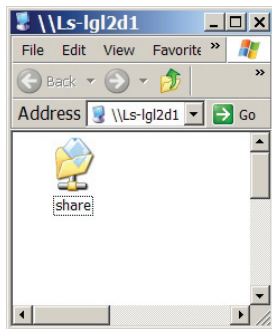
The *Buffalo NAS Navigator* icon opens the LinkStation's client utility. Turn to page 13 for more on using the NAS Navigator client utility.



# Accessing LinkStation Data from your PC

## To Access LinkStation Data from a PC:

Your LinkStation uses the folder “share” to hold data. The folder called “share” is already configured on your LinkStation. To start using your LinkStation, you can either click on the *Shortcut for LinkStation* on your desktop, or you may just use *drive L* in My Computer, which setup has mapped to the share in your LinkStation.

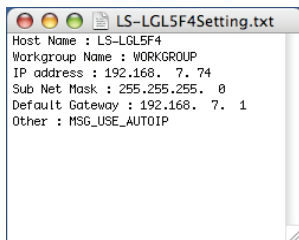


# Using your LinkStation with a Mac

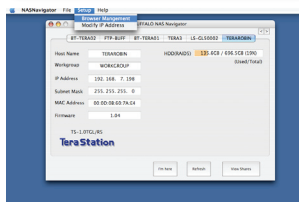


After installing the LinkNavigator software, your Mac will have two new icons on the desktop.

The *LS-LGLSettings.txt* file contains the IP address of your LinkStation. *NAS Navigator* is the LinkStation's client utility.



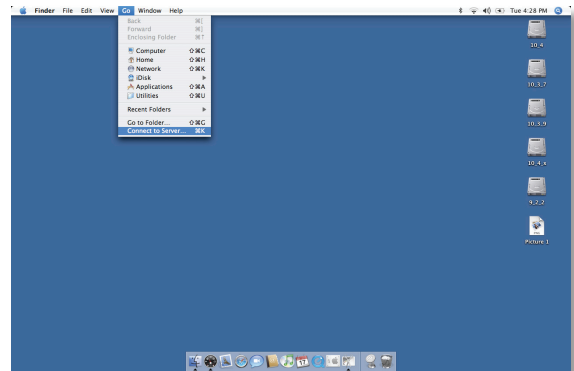
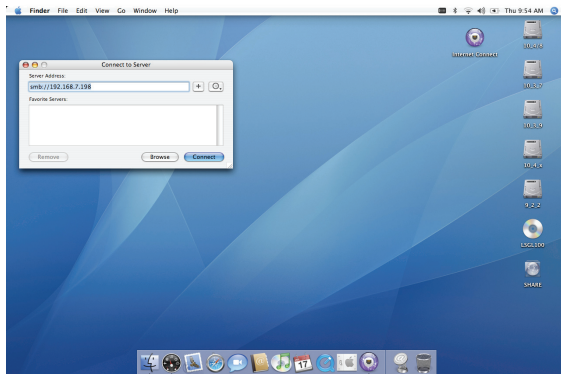
With the information in the *LS-LGLSettings.txt* file, you can easily connect to the LinkStation from any of your computers on your local network.



The *NAS Navigator* icon opens the LinkStation's client utility. See page 16 for more on using the NAS Navigator client utility.

# Accessing LinkStation Data from a Mac

You can add a link to your LinkStation's share folder to your desktop by adding it to the Mac's server list. Begin by clicking *Go*, and then choose *Connect to Server*.



In the *Server Address* field, enter your LinkStation's IP address in the form *smb://ipaddress* (where "ipaddress" is your LinkStation's IP address), and click *Connect*.

You can get your LinkStation's IP address from the *LS-LGLSettings.txt* file on your desktop, or see page 15.

# Accessing LinkStation Data from a Mac

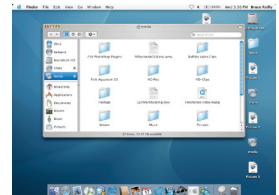
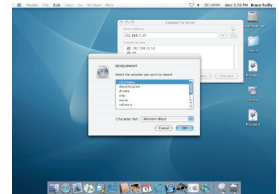
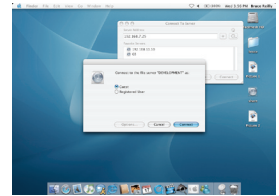
Select *Guest* and click on *Connect*. Note: If you have configured share permissions on your LinkStation, select *Registered User* and enter your login credentials.

Select *share* from the list of folders on the LinkStation.

The share will open. A link to it



will appear on your desktop.



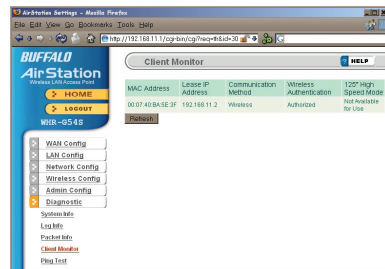
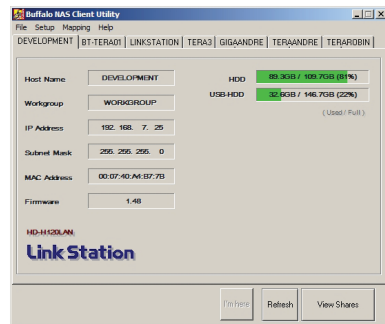
# Accessing LinkStation Data from a Mac

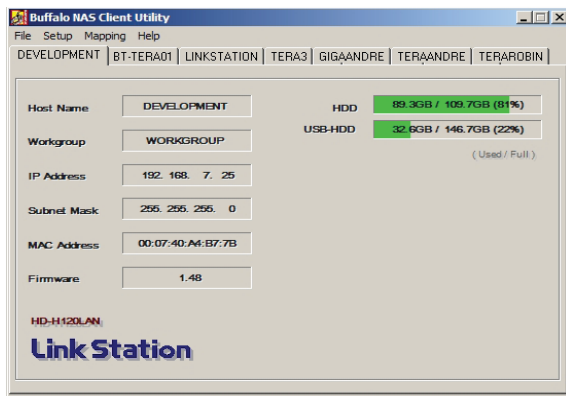
If you don't know your LinkStation's IP address, there are several ways to get it.

One simple method is to use the NAS Navigator client utility (included on your CD) to find your LinkStation(s). Just click on the tab for your LinkStation and you'll be able to read its IP address. See page 16 for more on NAS Navigator.

The *LS-LGLSettings.txt* file on your desktop contains the IP address of the linkstation at the time the setup program was run.

You can always get the LinkStation's IP address from your router's configuration utility. Many Buffalo routers list this information on the *Client Monitor* page, as shown to the right. Consult your router's documentation for instructions on identifying the LinkStation's IP address.





This is the *Buffalo NAS Client Utility*. Installed on your PC, it allows you to access each of the LinkStations (and TeraStations) on your network. Click *Refresh List* to get tabs for each of your LinkStations. Each tab shows the Host Name, Workgroup, IP Address, and Subnet Mask of the associated LinkStation, as well as the version of firmware it's running.

With a LinkStation's tab selected, you can click on the *View Shares* button to go directly to its root share. Clicking the *Setup* pulldown menu gives you options for changing your LinkStation's settings.

LAN Standards:	IEEE 802.3ab / IEEE 802.3 / IEEE 802.3u standard
Transmission Types:	1000BASE-T: 8B1Q4, PAM5; 100BASE-TX: 4B5B MLT-3; 10BASE-T Manchester Coding
Hard Drive:	Single SATA 7200 rpm
Connector Type:	RJ-45
Electric Current:	100-240V AC 50/60 Hz
Power Consumption:	~25W (Varies slightly with drive size)
Dimensions:	1.7" x 6.5" x 7.9" (45 x 164 x 200 mm.)
Weight:	~3.5 lbs (1.6 kg.) (Varies with drive size)
Operating Environment:	41°-95° F, 5°-35° C; 20-80% non-condensing
Client OS Support:	Windows Vista, XP, 2000, OS X 10.2.8 or later, Linux (SMB)

Buffalo Technology USA Inc.  
4030 West Braker Lane, Suite 120  
Austin, TX 78759-5319

### GENERAL INQUIRIES

Monday through Friday  
8:30am-5:30pm CST

**Direct:** 512-794-8533 | **Toll-free:** 800-456-9799 | **Fax:** 512-794-8520 | **Email:** *sales@buffalotech.com*

### TECHNICAL SUPPORT

North American Technical Support by phone is available 24 hours a day, 7 days a week. (USA and Canada).

**Toll-free:** (866) 752-6210 | **Email:** *info@buffalotech.com*



Buffalo Technology UK Ltd.  
2, Bracknell Beeches, Old Bracknell Lane  
Bracknell, Berkshire, RG12 7BW  
United Kingdom

### **GENERAL INQUIRIES**

Email: *[sales@buffalo-technology.com](mailto:sales@buffalo-technology.com)*

### **TECHNICAL SUPPORT**

Buffalo Technology provide technical support in English, German, French, Italian and Spanish. For hours and phone numbers, please go to:

*<http://www.buffalo-technology.com/contact>*

Thank you for your interest in Buffalo products. Our GPL software delivery policy is outlined below.

For each individual product and revision, please send one individually packaged self addressed padded CD shipping envelope, containing a blank CD-R to the following address:

**Buffalo Technology USA Inc.**  
**4030 W. Braker Lane Suite 120**  
**Austin, TX 78759**  
**Attn. GPL Department**

Within the envelope containing the self addressed padded CD shipping envelope, please include a bank draft or money order for \$20 (USD) (Made out to: Buffalo Technology) to cover our handling fee, postage and CD preparation. The CD-R should have the name of the product and revision number clearly written on the actual CD-R (not on the insert).

We do not send GPL source in bulk on a DVD. And order confirmation is not required by the GNU General Public License.

We are more than happy to comply with your request; however, we must ask you to comply with our GPL distribution policy, which complies with the GNU General Public License.

Sincerely,  
Buffalo Technology GPL Department

Thank you for your interest in Buffalo products. Our GPL software delivery policy is outlined below.

For each individual product and revision, please send one individually packaged self addressed padded CD shipping envelope, containing a blank CD-R to the following address:

**Buffalo Technology Ireland Ltd**  
**Free Zone East, Shannon, Co. Clare**  
**Ireland**  
**Attn. GPL Department**

Within the envelope containing the self addressed padded CD shipping envelope, please include a bank draft or money order for €20 (Euro) (Made out to: Buffalo Technology) to cover our handling fee, postage and CD preparation. The CD-R should have the name of the product and revision number clearly written on the actual CD-R (not on the insert).

We do not send GPL source in bulk on a DVD. And order confirmation is not required by the GNU General Public License.

We are more than happy to comply with your request; however, we must ask you to comply with our GPL distribution policy, which complies with the GNU General Public License.

Sincerely,  
Buffalo Technology GPL Department