

BUFFALOTM

HD-HSIU2



DriveStation HD-HSIU2 Series

QUICK SETUP GUIDE

www.buffalo-technology.com

DriveStation HD-HSIU2 Series

Package Contents

Thank you for purchasing a Buffalo DriveStation.

Package contents include:

- DriveStation
- USB 2.0 Cable
- FireWire (IEEE1394) Cable
- Quick Setup Guide
- Setup CD-ROM
- Warranty Statement

Introduction

The Buffalo TurboUSB utility can greatly improve the data transfer rates to and from your Buffalo USB hard drive. The utility cannot be used with other USB devices.

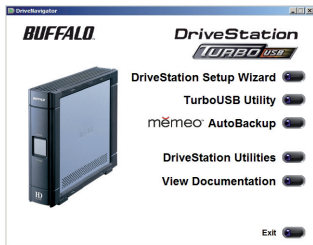
Installation

1

Insert your DriveNavigator CD in your computer's CD drive.

To setup your DriveStation, click on the *DriveStation Setup Wizard* and follow the instructions. (Fig: 1)

To install TurboUSB on your computer, Click on *TurboUSB Utility* button. Follow the wizard to complete the installation.



To use TurboUSB, you must first *enable* it. From the *Start* menu, choose *Programs > BUFFALO > TurboUSB > TurboUSB for HD-HSU2*. (Fig: 2)

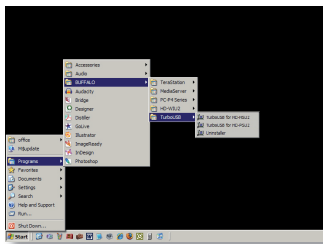


Fig: 2

Click *Enable* and follow the instructions. (Fig: 3)

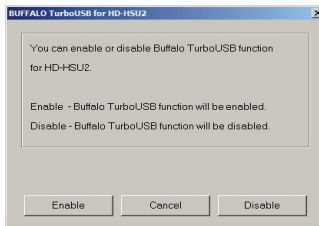



Fig: 3

Once the wizard has completed you must disconnect the DriveStation by clicking on the 'Safely Remove Hardware' icon  in the systray (located in the taskbar) (Fig: 5). Once indicated, remove and reattach the USB cable from your PC to finalise activation of TurboUSB.

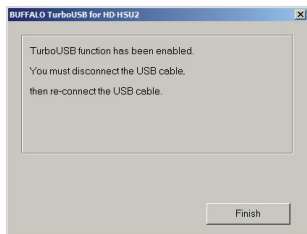


Fig: 4

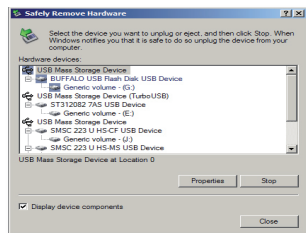


Fig: 5

You may also turn TurboUSB off from the same window by clicking *Disable* and following the steps (Fig: 3). You must then unplug and reconnect the USB hard drive to finalise the process. Use the 'Safely Remove Hardware' wizard to release the drive before unplugging it.

Is TurboUSB enabled?

3

To check whether TurboUSB is enabled, right-click on *My Computer* and choose *Properties > Hardware > Device Manager > Universal Serial Bus controllers*. If TurboUSB is enabled, your USB storage device will have “(TurboUSB)” added to its name. (Fig: 6)

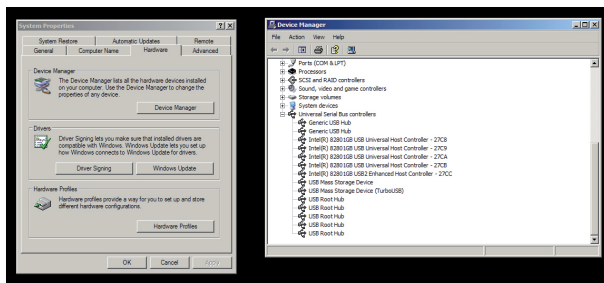


Fig: 6

Uninstalling

4

To remove the Buffalo TurboUSB utility from your computer, click *Start > Programs > BUFFALO > TurboUSB > Uninstaller*. This will launch an uninstall screen. Click on *Start* to run the uninstallation. (Fig: 7)

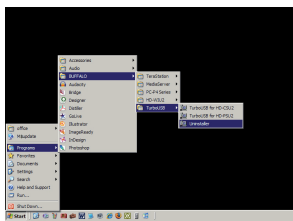


Fig: 7

TurboUSB For Mac

The Buffalo TurboUSB utility can greatly improve the data transfer rates to and from your Buffalo USB hard drive. Other USB devices are not affected by TurboUSB software.

Installation and Using TurboUSB

1

1. Insert the Buffalo Technology CD in your computer CD drive
2. Double-click on *TurboUSB.dmg*.
3. Navigate to the "TurboUSB" directory on the Desktop and double-click on TurboUSBHDDInstall.
4. After the Buffalo TurboUSB software is installed, click Restart.*
* You must restart your Mac.

Is TurboUSB enabled?

2

If TurboUSB is enabled, the icon of your USB storage device will look as indicated.



Technical Specifications

USB Standards:	USB Specification Rev. 2.0
Seek Time:	Max. 11 milliseconds
Transmission Speed:	Max. 480 Mbps
Power Consumption:	Max. 25W, Average 17W
Power Supply:	AC100-240V 50/60Hz
Dimensions:	1.77" (W) x 7.86" (H) x 6.41" (D) / 45(W) x 200(H) x 163(D) mm
Weight:	2.8 lb. / 1.5 kg
Operating Environment:	5 - 35 degree C / 41 - 95 degree F 20-80% humidity (non-condensing)

FCC Warning

This device complies with part 15 of the FCC Rules. Operation is subject to the following two conditions: (1) This device may not cause harmful interference, and (2) this device must accept any interference received, including interference that may cause undesired operation.

CE Mark Warning

This is a Class B product. In a domestic environment, this product may cause radio interference, in which case the user may be required to take adequate measures.

Environmental Information

- The equipment that you have purchased has required the extraction and use of natural resources for its production.
- The equipment may contain hazardous substances that could impact health and the environment.
- In order to avoid the dissemination of those substances in our environment and to diminish the pressure on the natural resources, we encourage you to use the appropriate take-back systems.
- The take-back systems will reuse or recycle most of the materials of your end life equipment in a sound way.
- The crossed-out wheeled bin symbol invites you to use those systems.



- If you need more information on the collection, reuse and recycling systems, please contact your local or regional waste administration.

Technical Support**USA/Canada:**

Helpdesk Hours	<i>24 hours a day, 7 days a week</i>
Phone	<i>866-752-6210 toll-free</i>
Email	<i>info@buffalotech.com</i>

Europe:

Helpdesk Hours	<i>Monday-Thursday 9:00 AM - 6:00 PM</i>
	<i>Friday 9:00 AM - 4:30 PM</i>
Phone	<i>+353 61 70 80 50</i>
Phone (UK only)	<i>08712 50 12 60</i>
Email	<i>helpdesk@buffalo-technology.ie</i>