

BUFFALOTM

Dualie Portable Drive & iPod/iPhone Dock User Manual



Table of Contents

| | |
|--|----|
| Box Contents | 3 |
| Connection Options | 4 |
| Dock | 5 |
| Using the Dualie with Windows | 6 |
| Specifications | 7 |
| Contact Information - North America and Europe | 8 |
| Contact Information - Asian Pacific | 9 |
| Warranty | 10 |
| Compliance Information | 11 |

Box Contents

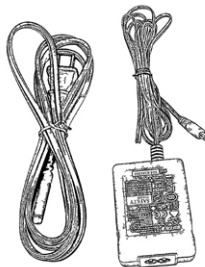
Dualie Drive



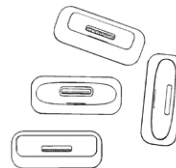
Docking Station



Power Supply



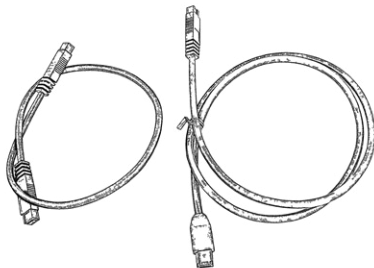
Dock Adaptors



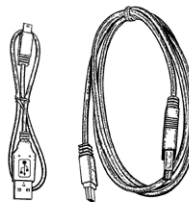
QSG and Warranty



FireWire® cables

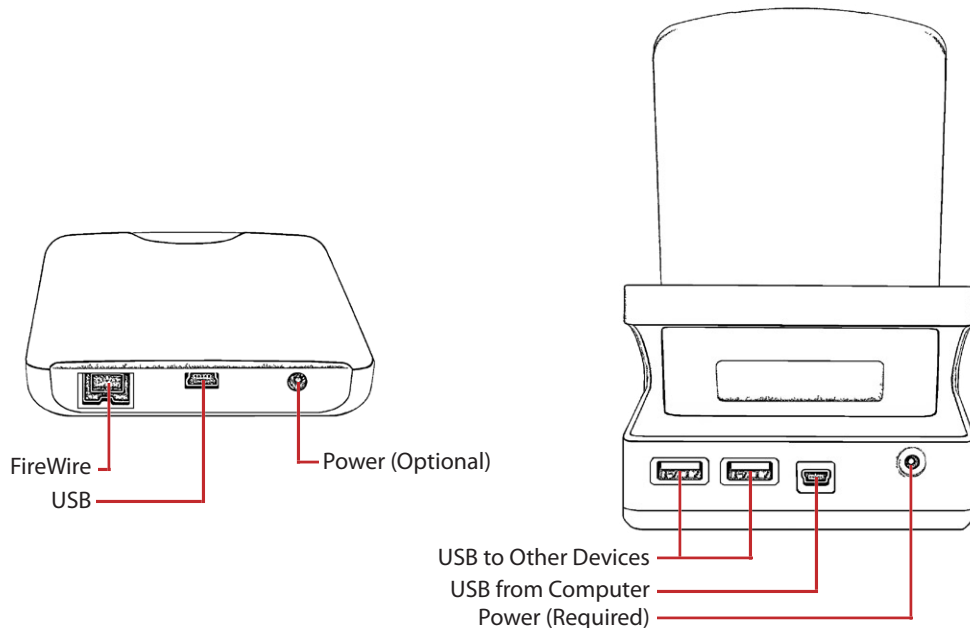


USB cables



Connection Options

You may connect the Dualie drive directly to your computer with a FireWire or USB cable, or you may connect the dock to your computer with with a USB cable, and then put the drive into the dock to use it.



Dock



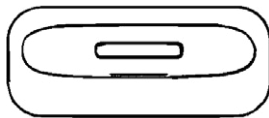
The dock will also charge your iPhone or iPod (not included). Syncing with iTunes is supported from the dock. Interchangeable dock adapters allow use with any devices with the 30 pin connector. 4 dock adapters are included with the Dualie. Many other adapters are available at your Apple store.



iPhone 3G S
16GB 32GB



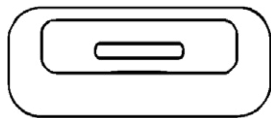
iPhone 3G
8GB 16GB



iPod touch
2nd generation
8GB 16GB 32GB



iPod classic
120GB



iPod nano
4th generation (video)
8GB 16GB

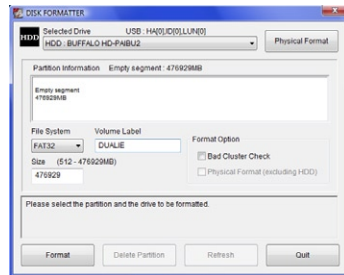
Using the Dualie with Windows

The Dualie comes formatted with HFS+ for use with Macs and Time Machine. To use the Dualie with a Windows PC, you must first reformat it with NTFS (or FAT32). This will erase any data on the drive, so back up any important data on the drive before reformatting.

To reformat the Dualie with NTFS, use the format tool built into your operating system.

To reformat the Dualie with FAT32, download and run the FAT32 Format Utility from the download section of the support pages at www.buffalotech.com.

In the FAT32 Format Utility, select your Buffalo hard drive from the drop-down menu at the top of the window. Choose FAT32 for the File System and choose a volume label. Click *Format* to reformat the drive.



Specifications

| | |
|------------------------|--|
| FireWire: | IEEE 1394a 400Mb/s, IEEE 1394b 800Mb/s |
| USB: | USB 2.0 |
| Compatible OS: | Windows XP, Vista Mac OS X 10.4 or later |
| Included Adapters: | iPod classic, iPod nano, iPod touch (2nd generation), iPhone 3G and 3G S |
| Power Consumption: | Average 2.5 W (USB) Average 3 W (FireWire) |
| Dimensions: | 5.25" x 3.25" x 0.75" (134 x 83 x 22 mm) for drive 4" x 2.75" x 3.75" (101 x 70 x 96 mm) for dock |
| Weight: | 8 ounces (0.25 kg.) for drive 13.6 ounces (0.42 kg.) for dock |
| Operating Environment: | 41° - 95° F; 20-80% non-condensing |
| Power Adapter | UI 318-05 (UNIFIVE) |

Mac, Mac OS, and FireWire are trademarks of Apple Inc., registered in the U.S. and other countries. "Made for iPod" means that an electronic accessory has been designed to connect specifically to iPod and has been certified by the developer to meet Apple performance standards. "Works with iPhone" means that an electronic accessory has been designed to connect specifically to iPhone and has been certified by the developer to meet Apple performance standards. Apple is not responsible for the operation of this device or its compliance with safety and regulatory standards. iPod is a trademark of Apple Inc., registered in the U.S. and other countries. iPhone is a trademark of Apple Inc. The iPhone pictured on pages 1 and 5 is for example only. The Buffalo Dualie does not include an iPhone in the package. Windows is a registered trademark of Microsoft Corporation in the United States and other countries.

Contact Information

North America

Buffalo Technology USA Inc.
11100 Metric Blvd., Suite 750
Austin, TX 78758

GENERAL INQUIRIES

Monday through Friday
8:30am-5:30pm CST

Direct: 512-794-8533

Toll-free: 800-456-9799

Fax: 512-794-8520

Email: sales@buffalotech.com

TECHNICAL SUPPORT

North American Technical Support by phone is available 24 hours a day, 7 days a week. (USA and Canada).

Toll-free: (866) 752-6210

Email: info@buffalotech.com

Europe

Buffalo Technology UK Ltd.
2 Bracknell Beeches, Old Bracknell Lane
Bracknell, Berkshire, RG12 7BW
United Kingdom

GENERAL INQUIRIES

Email: sales@buffalo-technology.com

TECHNICAL SUPPORT

Buffalo Technology provides technical support in English, German, French, Italian, and Spanish. For opening hours and relevant telephone numbers, please go to

www.buffalo-technology.com/contact

Contact Information - Asian Pacific

Taiwan

TEL: 0800-660-886

e-mail: support@buffalo-tech.com.tw

Republic of Korea

TEL: 02-2057-2095

e-mail: support@buffalotech.co.kr

India

TEL: 1-8004256210

e-mail: csbuffalo@accelfrontline.in

Singapore

TEL: 65-6297-2085

e-mail: buffalo@blumm.com

China

TEL: 86-800-820-8262

e-mail: support@buffalo-china.com

Australia

345 Princes Highway, Rockdale NSW 2216

TEL: 1300 761 310

Hong Kong

TEL: 852-2345-0005

e-mail: support@hornington.com

Thailand

TEL: 02-716-6669

Malaysia

TEL: 03-5032-0138

e-mail: buffalo@ecsm.com.my

Indonesia

TEL: 021-6231-2893

Philippines

TEL: 2-688-3999

e-mail: digisupport@msi-ecs.com.ph

Other Areas

Please contact the shop or distributor where you purchased the unit, referring to the attached warranty card issued by the distributor.

Warranty

Buffalo Technology (USA), Inc. (Buffalo) warrants this product to be free from defects in materials and workmanship for a period of one year from the date of purchase. This warranty applies to the first end-user and is not transferable to subsequent owners, and it applies only to the country/region of purchase.

This warranty does not apply to third party, non-Buffalo produced components that are supplied with the warranted Buffalo product. Buffalo makes no warranty of any kind on such products which, if included, are provided "as is." Excluded is any damage resulting from accident, misuse, abuse, non-Buffalo supplied or approved alterations or unapproved media, or external environmental causes. Buffalo makes no warranty that the product will be free of vulnerability from intrusion or other outside attack.

Should this product have a defect in materials or workmanship, you must notify Buffalo within the warranty period to receive warranty service.

If the Buffalo representative determines your product is eligible for warranty service, you will be required to return it to Buffalo, shipping prepaid, along with proper identification, a return authorization number provided by the representative, and proof of purchase. NOTE: Buffalo is not responsible for protecting, recovering, or returning data as part of warranty service, so you should duplicate or back up your data before shipment.

Buffalo will repair or replace the product at Buffalo's exclusive option and expense. Buffalo may use new or refurbished (believed by Buffalo to be equivalent to new) parts or products to do so. If neither option is possible, Buffalo reserves the right in its sole discretion to provide a refund as full satisfaction of this warranty.

In no event shall Buffalo's liability exceed the original purchase price of the product. Further, Buffalo shall not be liable for indirect, incidental, consequential, or special damages or losses, including loss of data, use, or profits.

The above warranty is exclusive and in lieu of any other warranties, express or implied. Buffalo specifically disclaims any implied warranties, including any implied warranties of merchantability and fitness for a particular purpose. Any implied warranty required by applicable law shall be limited in duration to the express warranty term.

SOME STATES DO NOT ALLOW THE EXCLUSION OR LIMITATION OF INCIDENTAL OR CONSEQUENTIAL DAMAGES, OR LIMITATIONS ON HOW LONG AN IMPLIED WARRANTY LASTS, SO THE ABOVE LIMITATIONS AND/OR EXCLUSIONS MAY NOT APPLY TO YOU. THIS WARRANTY GIVES YOU SPECIFIC LEGAL RIGHTS, AND YOU MAY ALSO HAVE OTHER LEGAL RIGHTS THAT VARY FROM STATE TO STATE OR FROM COUNTRY TO COUNTRY.

Compliance Information

FCC Notice

Note: This equipment has been tested and found to comply with the limits for a Class B digital device, pursuant to Part 15 of the FCC Rules. These limits are designed to provide reasonable protection against harmful interference in a residential installation. This equipment generates, uses and can radiate radio frequency energy and, if not installed and used in accordance with the instructions, may cause harmful interference to radio communications. However, there is no guarantee that interference will not occur in a particular installation. If this equipment does cause harmful interference to radio or television reception, which can be determined by turning the equipment off and on, the user is encouraged to try to correct the interference by one or more of the following measures:

- Reorient or relocate the receiving antenna.
- Increase the separation between the equipment and receiver.
- Connect the equipment into an outlet on a circuit different from that to which the receiver is connected.
- Consult the dealer or an experienced radio/TV technician for help.

CE Mark Warning

This is a Class B product. In a domestic environment, this product may cause radio interference, in which case the user may be required to take adequate measures.