

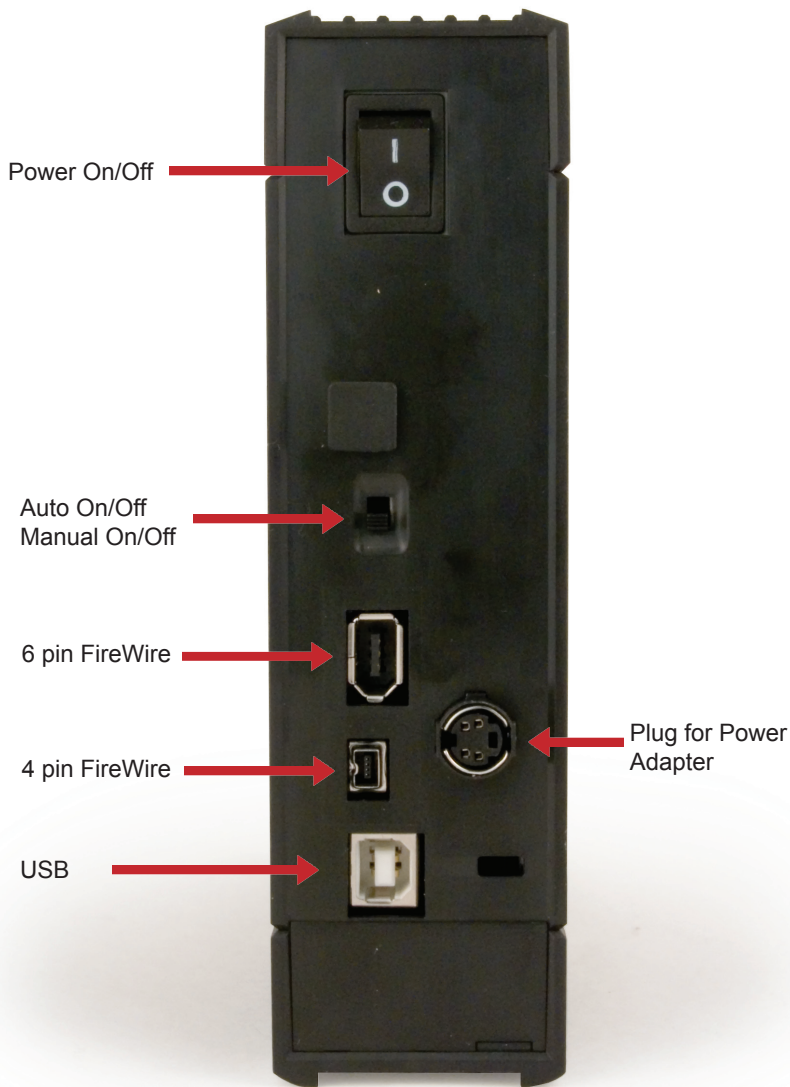
DriveStation Combo USB 2.0 and Firewire Hard Drive



BUFFALO™

Package contents:

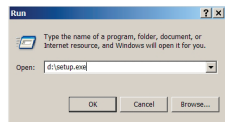
- Main Unit (DriveStation)
- Power Cord
- USB Cable
- 1394/FireWire Cable
- DriveNavigator Installation CD
- User Guides



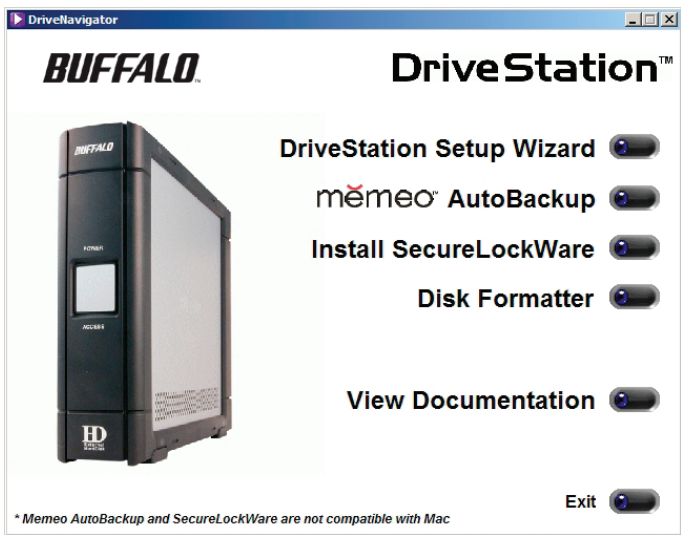
Congratulations on your new DriveStation Combo!

To begin, insert the DriveNavigator CD in your PC. The setup program will run. Follow the steps to connect your DriveStation Combo.

If the setup program doesn't run automatically, click *Start*, then *Run*, and then type "d:\setup.exe" in the *Open* window. Click *OK*.



Click *DriveStation Setup Wizard* to begin.



After completing the setup wizard, your DriveStation Combo is installed and ready to use!

By default, the DriveStation is formatted with FAT32, allowing it to be used with most common operating systems. If you're going to use it with programs that generate filesizes larger than 4GB, such as backup or video editing software, reformat the DriveStation as an NTFS drive.

The DriveStation includes several optional utilities. To install and use these utilities, insert the CD-ROM that came with your DriveStation into a Windows PC.



The DriveStation Setup Wizard quickly guides you through the cabling and power-up process for the DriveStation.

Memeo AutoBackup software is available for backing up documents, multimedia files, and other files from your Windows PC to the DriveStation. A license for using Memeo on a single PC or workstation is included with your DriveStation. Please view the Memeo documentation for more information on installing and using Memeo. As with all backup programs, reformat the DriveStation with NTFS before use with Memeo backup software.

Disk Formatter lets you easily reformat your DriveStation.

SecureLockWare encrypts the data on your DriveStation, preventing the data from being accessed by anyone but you.

To learn more about installing and using these utilities, click on *View Documentation*.

FAQ

The following is a list of common issues with the DriveStation. Following each issue are possible resolutions.

I see the DriveStation in *My Computer* but I cannot access it.

The drive requires formatting. Try using the Disk Formatter Utility on the DriveNavigator CD-ROM. Consult the manual for the Disk Formatter Utility for more help. The manual can also be found on the DriveNavigator CD-ROM.

I cannot see the DriveStation in *My Computer*.

Verify that the POWER light is on. If it is not, then ensure that the power switch is in the ON position.

Try toggling the POWER MODE switch right below the power switch. The POWER MODE switch toggles whether the device is powered up via a USB signal ("Auto") or purely based on the power switch's position ("Manual").

If you have installed the Power Save Utility, then verify that the DriveStation was not put into power saving mode. Consult the manual for the Power Save Utility for additional help. The manual can be found on the DriveNavigator CD-ROM.

Verify that the hard drive inside the DriveStation is spinning. This can be verified by placing your hand on the sides of the case and feeling for a slight vibration. Also, after the DriveStation has been powered on for fifteen minutes or more it will begin to get warm. If neither of the proceeding tests verified that the hard drive is spinning, then please contact technical support for further assistance.

My backup program can't save files to the DriveStation.

Reformat your DriveStation with NTFS. FAT32 is limited to 4GB filesizes.

USB Standards:	USB Specification Rev. 2.0
Data Transfer Speed:	Max 480 Mb/s (USB 2.0 Interface) Max 400 Mb/s (FireWire 400 interface)
Seek Time:	Max. 11 milliseconds
Transmission Speed:	Max. 480 Mbps
Power Consumption:	Max. 25W, Average 17W
Power Supply:	AC100V-240V 50/60Hz (autosensing)
Dimensions:	1.77 x 6.41 7.86 inches (45 x 163 x 200 mm.)
Weight:	2.8 lbs. (1.27 kg)
Operating Environment:	5 - 35 degree C 20-80% humidity (non-condensing)
Windows Compatability:	Windows Me, 2000, XP, Server 2003

FCC Warning

This device complies with part 15 of the FCC Rules. Operation is subject to the following two conditions: (1) This device may not cause harmful interference, and (2) this device must accept any interference received, including interference that may cause undesired operation.

BUFFALOTM

<http://www.buffalotech.com>

USA/Canada Technical Support is available 24 hours a day, 7 days a week

toll-free: 866-752-6210

email: info@buffalotech.com

Europe Technical Support is available between 9am-6pm (Monday-Thursday) (GMT)

and 9am-4:30pm on Fridays.

email: helpdesk@buffalo-technology.ie

phone (UK only): 087 12 50 12 60*

phone: +353 61 70 80 50

**Calls cost 8.5p per minute*

©2005-2006, Buffalo Inc.